

Investor Report: Burlington Mortgages No. 1 Designated Activity Company

From:	AIB
Month Ending:	31/07/2024
Interest Payments Date:	20/08/2024

Investor Contacts		
Mark Whelan	Head of AIB Term Funding & Collateral Management	mark.a.whelan@aib.ie
Jonathan Lynch	Manager, AIB Collateral Management Unit	jonathan.d.lynch@aib.ie

PCS ID	00109-STs term
ESMA Reference	635400DJAT97IZDCJN35N2020001
Legal Entity Identifier	635400DJAT97IZDCJN35
European Data Warehouse	RMBSIE000145100420208

Deal Participation Information	
Party	Provider
Issuer	Burlington Mortgages No.1 Designated Activity Company
Sellers	EBS d.a.c. & Haven Mortgages Limited
Cash Manager	EBS d.a.c.
Issuer Account Bank	AIB plc
Collection Account Bank	AIB plc
Trustee	BNY Mellon Corporate Trustee Services Limited
Principal Paying Agent & Reference Agent	The Bank of New York Mellon, London Branch
Registrar	The Bank of New York Mellon, Luxembourg Branch
Corporate Services Provider	Intertrust Management Ireland Limited
Back-Up Servicer Facilitator	Intertrust Management Ireland Limited
Subordinated Loan Providers	EBS d.a.c. & Haven Mortgages Limited
Share Trustee	Intertrust Nominees (Ireland) Limited
Arranger	Merrill Lynch International ("BofA Securities")

Details of Notes Issued													
Class of Notes	Reference	Original Moody's Rating	Original DBRS Rating	Current Moody's Rating	Current DBRS Rating	Original Tranche Balance (Euro)	Issue Price	Reference Rate	Margin (up to & including First Optional Redemption Date)	Step-Up Margin (after First Optional Redemption Date)	First Optional Redemption Date	Final Maturity Date	
A1 Notes	XS2131184983	Aaa	AAA	Aaa	AAA	€ 1,731,400,000	100%	1 Month EURIBOR	0.40%	n/a	0.80%	Mar-2025	Nov-2058
A2 Notes	XS2131185014	Aaa	AAA	Aaa	AAA	€ 1,731,400,000	100%	0.35% Fixed	n/a	n/a		Mar-2025	Nov-2058
B Notes	XS2131185105	Aa2	AA(lo)	Aa1	AA (high)	€ 201,300,000	100%	1 Month EURIBOR	0.95%	n/a	1.90%	Mar-2025	Nov-2058
C Notes	XS2131185873	A1	A(lo)	Aa2	AA (high)	€ 110,700,000	100%	1 Month EURIBOR	1.35%	n/a	2.35%	Mar-2025	Nov-2058
D Notes	XS2131186848	Baa3	BBB(lo)	A2	AA (low)	€ 110,700,000	100%	1 Month EURIBOR	1.75%	n/a	2.75%	Mar-2025	Nov-2058
E Notes	XS2131189511	B3	BB	Ba2	A	€ 80,500,000	100%	1 Month EURIBOR	2.75%	n/a	3.75%	Mar-2025	Nov-2058
Z Notes	XS2131190956	n/a	n/a	n/a	n/a	€ 60,500,000	100%	8.00% Fixed	n/a	n/a		Mar-2025	Nov-2058
R1A Notes	XS2132421137	n/a	n/a	n/a	n/a	€ 10,000	100%	n/a	n/a	n/a		Mar-2025	Nov-2058
R1B Notes	XS2132421301	n/a	n/a	n/a	n/a	€ 10,000	100%	n/a	n/a	n/a		Mar-2025	Nov-2058
R2A Notes	XS2132421483	n/a	n/a	n/a	n/a	€ 10,000	100%	n/a	n/a	n/a		Mar-2025	Nov-2058
R2B Notes	XS2132421566	n/a	n/a	n/a	n/a	€ 10,000	100%	n/a	n/a	n/a		Mar-2025	Nov-2058

Deal Information	
Issue Date	16/03/2020
First Distribution Date	20/04/2020
Minimum Denominations (Euro)	100,000
Payments Frequency	Monthly
Interest Calculation	Actual / 360

This Report	
Interest Period Start Date	22/07/2024
Interest Period End Date	20/08/2024
No of days in Interest Period	29
Next Payments Date	20/09/2024

Principal Payments on Notes										
Class of Notes	Reference	Original Balance (Euro)	% of Notes	Opening Balance (Euro)	% of Notes	Amortisation (Euro)	Closing Balance (Euro)	% of Notes	Opening Pool Factor	Closing Pool Factor
A1 Notes	XS2131184983	1,731,400,000	42.9997%	36,164,159	1.5512%	(19,231,205)	16,932,954	0.7324%	0.02	0.01
A2 Notes	XS2131185014	1,731,400,000	42.9997%	1,731,400,000	74.2674%	0	1,731,400,000	74.8852%	1.00	1.00
B Notes	XS2131185105	201,300,000	4.9993%	201,300,000	8.6347%	0	201,300,000	8.7065%	1.00	1.00
C Notes	XS2131185873	110,700,000	2.7493%	110,700,000	4.7484%	0	110,700,000	4.7879%	1.00	1.00
D Notes	XS2131186848	110,700,000	2.7493%	110,700,000	4.7484%	0	110,700,000	4.7879%	1.00	1.00
E Notes	XS2131189511	80,500,000	1.9992%	80,500,000	3.4530%	0	80,500,000	3.4817%	1.00	1.00
Z Notes	XS2131190956	60,500,000	1.5025%	60,500,000	2.5951%	0	60,500,000	2.6167%	1.00	1.00
R1A Notes	XS2132421137	10,000	0.0002%	10,000	0.0004%	0	10,000	0.0004%	1.00	1.00
R1B Notes	XS2132421301	10,000	0.0002%	10,000	0.0004%	0	10,000	0.0004%	1.00	1.00
R2A Notes	XS2132421483	10,000	0.0002%	10,000	0.0004%	0	10,000	0.0004%	1.00	1.00
R2B Notes	XS2132421566	10,000	0.0002%	10,000	0.0004%	0	10,000	0.0004%	1.00	1.00
Total		4,026,540,000	100%	2,331,304,159	100.0000%	(19,231,205)	2,312,072,954	100.0000%	0.58	0.57

Interest Payments on Notes							
Class of Notes	Reference	Interest Rate	Number of Days	Interest Due (Euro)	Interest Paid (Euro)	Unpaid Interest (Euro)	Cumulative Unpaid (Euro)
A1 Notes	XS2131184983	4.033%	29	117,490.31	117,490.31	0	0
A2 Notes	XS2131185014	0.350%	29	488,158.61	488,158.61	0	0
B Notes	XS2131185105	4.583%	29	743,171.64	743,171.64	0	0
C Notes	XS2131185873	4.983%	29	444,359.02	444,359.02	0	0
D Notes	XS2131186848	5.383%	29	480,029.02	480,029.02	0	0
E Notes	XS2131189511	6.383%	29	413,919.81	413,919.81	0	0
Z Notes	XS2131190956	8.000%	29	389,888.88	389,888.88	0	0
R1A Notes	XS2132421137	n/a	n/a	n/a	n/a	n/a	n/a
R1B Notes	XS2132421301	n/a	n/a	n/a	n/a	n/a	n/a
R2A Notes	XS2132421483	n/a	n/a	n/a	n/a	n/a	n/a
R2B Notes	XS2132421566	n/a	n/a	n/a	n/a	n/a	n/a
Total				3,077,017.29	3,077,017.29	-	-

General Credit Structure							
Description	Original Balance (Euro)	Opening Balance (Euro)	Drawings in Month (Euro)	Replenished in Month (Euro)	Closing Balance (Euro)	Balance Required (Euro)	Deficit (Euro)
General Reserve Fund	3,774,000	3,774,000	-	-	3,774,000	3,774,000	-
Liquidity Reserve Fund	25,971,000	13,256,731	(144,234)	-	13,112,497	13,112,497	-
Total	29,745,000	17,030,731	(144,234)	-	16,886,497	16,886,497	-

Revenue Analysis	
	Euro
Revenue Receipts	6,492,002
Interest from Bank Accounts	135,633
Class A Liquidity Reserve Fund Excess Amount	144,234
Class A Redemption Date, Class A Liquidity Reserve Amount	0
General Reserve Fund Excess Amount	0
Other Net Income, excluding Principal Receipts	0
Principal Deficiency Excess Revenue Amounts	0
less:	
Payments to the Sellers	0
Tax Payments, excluding amounts due on the Issuer Profit Ledger	0
Available Revenue Receipts	6,771,869
Allocation of Available Revenue Receipts	
Trustee	0
Amounts due to the Reference Agent, the Registrar & the paying Agent, the Cash Manager,	0
the Back-Up Servicer Facilitator & the Corporate Services Provider, the Issuer Account Bank	(1,458)
any amounts payable by the Issuer to third parties	0
Servicer (EBS)	(2,894)
Servicer (Haven)	(192,919)
Issuer Profit Fee	(109,331)
Class A Notes Interest	(100)
Class A Liquidity Reserve Fund Required Amount	(605,649)
Class A Principal Deficiency Sub-Ledger	0
Class B Notes Interest	(743,172)
Class B Principal Deficiency Sub-Ledger	0
Class C Notes Interest	(444,359)
Class C Principal Deficiency Sub-Ledger	0
Class D Notes Interest	(480,029)
Class D Principal Deficiency Sub-Ledger	0
Class E Notes Interest	(413,920)
Class E Principal Deficiency Sub-Ledger	0
General Reserve Fund Required Amount	0
Class Z Principal Deficiency Sub-Ledger	410,430
Class Z Notes Interest	(389,889)
On or after the First Optional Redemption Date or the Early Redemption Date, amounts to redeem the Rated Notes	0
Subordinated Loan Interest (EBS)	0
Subordinated Loan Interest (Haven)	0
Subordinated Loan Principal (EBS)	0
Subordinated Loan Principal (Haven)	0
Amounts to be credited to the Deposit Account to be applied on the next Interest Payment Date as Available Revenue Receipts	0
Class R1A Payment	(2,424,228)
Class R1B Payment	(1,374,351)
Class R1 Principal Payment	0
Class R2A Payment	0
Class R2B Payment	0
Reconciliation	0

Principal Deficiency Ledger							
Class of Notes	Reference	Opening Balance (Euro)	Increase in Losses (Euro)	Decrease in Losses (Euro)	Net Losses (Euro)	Allocation of Revenue Receipts	Closing Balance (Euro)
A1 Notes	XS2131184983	0	0	0		0	0
A2 Notes	XS2131185014	0	0	0		0	0
B Notes	XS2131185105	0	0	0		0	0
C Notes	XS2131185873	0	0	0		0	0
D Notes	XS2131186848	0	0	0		0	0
E Notes	XS2131189511	0	0	0		0	0
Z Notes	XS2131190956	-	262,967	(673,397)	(410,430)	(410,430)	-

Principal Deficiency Ledger					
Class of Notes	Reference	Cumulative Increase in Losses (Euro)	Cumulative Decrease in Losses (Euro)	Cumulative Net Losses (Euro)	Cumulative Allocation of Revenue Receipts
A1 Notes	XS2131184983	0	0		0
A2 Notes	XS2131185014	0	0		0
B Notes	XS2131185105	0	0		0
C Notes	XS2131185873	0	0		0
D Notes	XS2131186848	0	0		0
E Notes	XS2131189511	0	0		0
Z Notes	XS2131190956	14,081,569	(8,521,803)	5,559,766	5,559,766

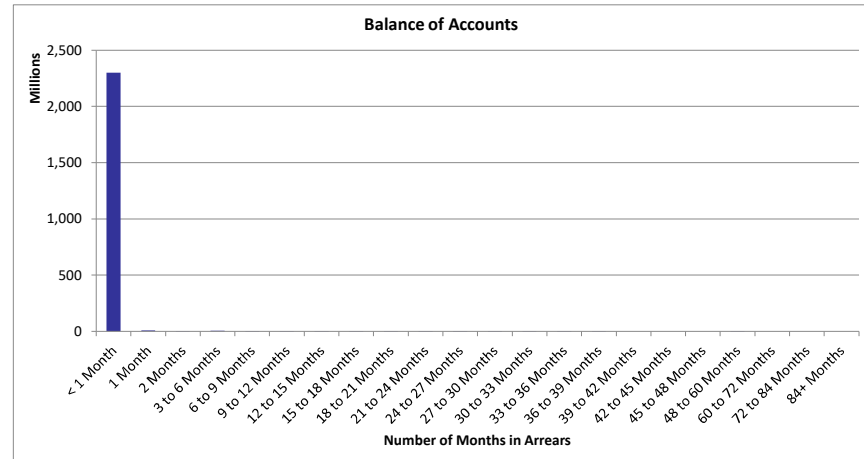
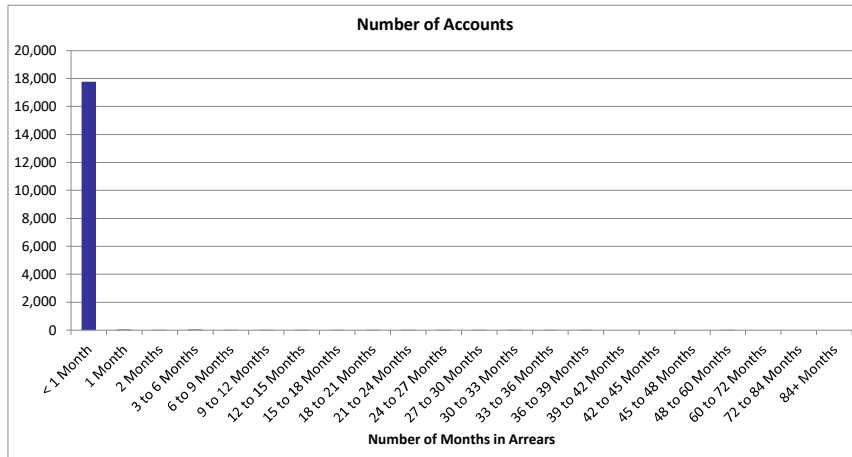
Principal Analysis		Euro
Principal Receipts		19,641,636
Proceeds of issue of the Class R1 Notes and the Class R2 Note		0
Any credit to the Principal Deficiency Ledgers		(410,430)
Any other Available Principal receipts		0
The excess of the proceeds of the Collateralised Notes over the Consideration		0
Optional Purchase Price upon sale of the Portfolio further to exercise of the Call Option		0
less:		
Available Principal Receipts applied as Principal Deficiency Excess Revenue Amounts		0
Available Principal		19,231,205
Allocation of Available Principle		
Principal Addition Amounts to be applied to meet any Senior Expenses Deficit;		0
Pro rata and pari passu to the principal amounts due on the Class A1 Notes;		(19,231,205)
Pro rata and pari passu to the principal amounts due on the Class A2 Notes;		0
Pro rata and pari passu to the principal amounts due on the Class B Notes;		0
Pro rata and pari passu to the principal amounts due on the Class C Notes;		0
Pro rata and pari passu to the principal amounts due on the Class D Notes;		0
Pro rata and pari passu to the principal amounts due on the Class E Notes;		0
Pro rata and pari passu to the principal amounts due on the Class Z Notes;		0
Principal amount due on the Class R2 Notes		0
All remaining amounts to be applied as Available Revenue Receipts		0
Reconciliation		0

Mortgage Portfolio Analysis: Properties Under Management					
	This Period		Cumulative (Active Loans only)		Cumulative Active and Redeemed Loans
Description	No of Properties	Principal Balance Amount	No of Properties	Principal Balance Amount	Number of Properties
Abandoned	0	0.00	0	0.00	0
Property in Possession	0	0.00	0	0.00	0
Sold	0	0.00	0	0.00	0

Mortgage Portfolio Analysis		
	This Period (Euro)	Cumulative (Euro)
Opening Mortgage Principle Balance	2,345,044,827	4,026,483,467
Scheduled Principal Payments and Early Redemptions	19,641,636	1,708,850,747
Charge Offs	0	0
Non-cash movements	(1,539)	(8,488,877)
Mortgages Repurchased by Sellers	0	716,867
Closing Mortgage Principal Balance	2,325,404,730	2,325,404,730

Stratification Tables

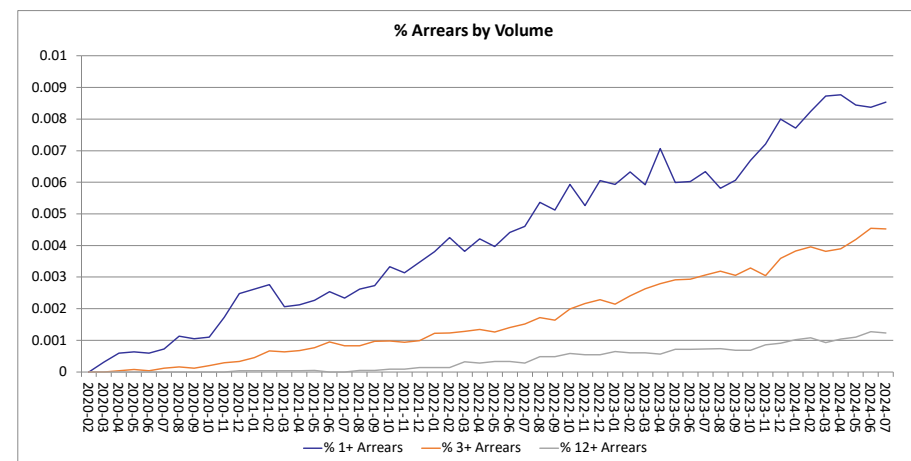
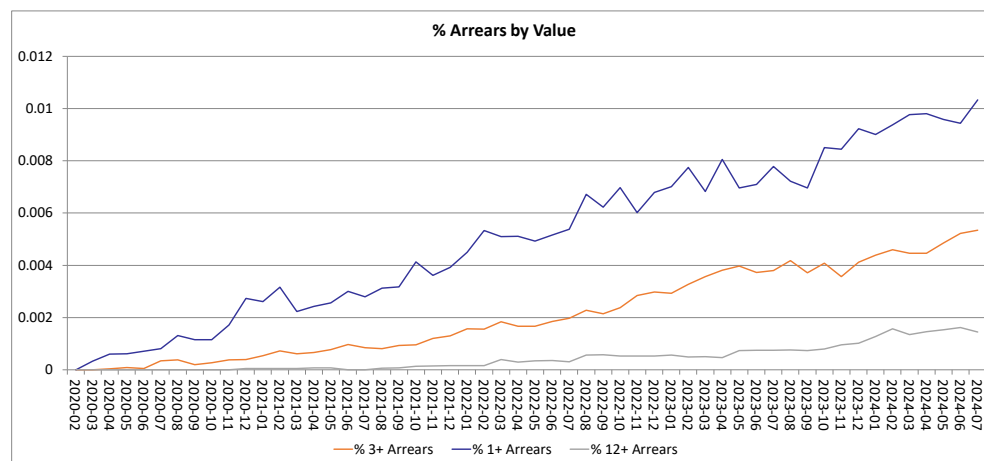
Number of Repayments in Arrears				
Number of Months In Arrears	Number of Accounts	% Number of Accounts	Outstanding Balance	% of Total Outstanding Balance
< 1 Month	17,765	99.15%	2,301,378,246	98.97%
1 Month	51	0.28%	8,448,863	0.36%
2 Months	21	0.12%	3,154,969	0.14%
3 to 6 Months	36	0.20%	5,976,812	0.26%
6 to 9 Months	16	0.09%	2,182,971	0.09%
9 to 12 Months	7	0.04%	896,176	0.04%
12 to 15 Months	3	0.02%	367,703	0.02%
15 to 18 Months	4	0.02%	395,600	0.02%
18 to 21 Months	3	0.02%	347,042	0.01%
21 to 24 Months	1	0.01%	159,137	0.01%
24 to 27 Months	4	0.02%	955,024	0.04%
27 to 30 Months	1	0.01%	152,163	0.01%
30 to 33 Months	2	0.01%	572,372	0.02%
33 to 36 Months	1	0.01%	113,658	0.00%
36 to 39 Months	2	0.01%	280,473	0.01%
39 to 42 Months	0	0.00%	0	0.00%
42 to 45 Months	0	0.00%	0	0.00%
45 to 48 Months	0	0.00%	0	0.00%
48 to 60 Months	1	0.01%	23,520	0.00%
60 to 72 Months	0	0.00%	0	0.00%
72 to 84 Months	0	0.00%	0	0.00%
84+ Months	0	0.00%	0	0.00%
Total	17,918	100.00%	2,325,404,730	100.00%



Repayments in Arrears - Last 6 Months						
Months in Arrears Value of Accounts (€m)	Feb-24	Mar-24	Apr-24	May-24	Jun-24	Jul-24
12+ Arrears	3.80	3.25	3.47	3.63	3.78	3.37
3+ Arrears**	11.18	10.75	10.66	11.49	12.25	12.42
1+ Arrears*	22.79	23.53	23.43	22.68	22.13	24.03
Total Arrears	22.79	23.53	23.43	22.68	22.13	24.03
Total Portfolio	2,430.29	2,407.45	2,388.33	2,365.27	2,345.04	2,325.40
Months in Arrears Number of Accounts	Feb-24	Mar-24	Apr-24	May-24	Jun-24	Jul-24
12+ Arrears	20	17	19	20	23	22
3+ Arrears**	73	70	71	76	82	81
1+ Arrears*	152	160	160	153	151	153
Total Arrears	152	160	160	153	151	153
Total Portfolio	18,452	18,338	18,243	18,125	18,026	17,918

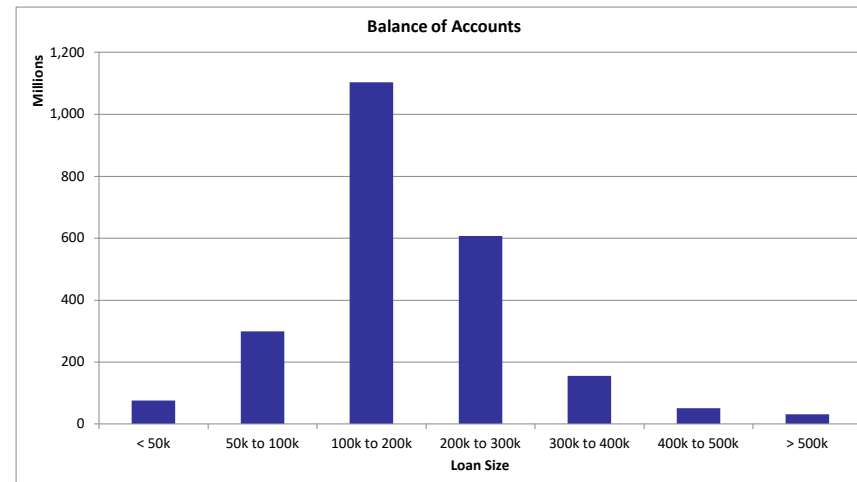
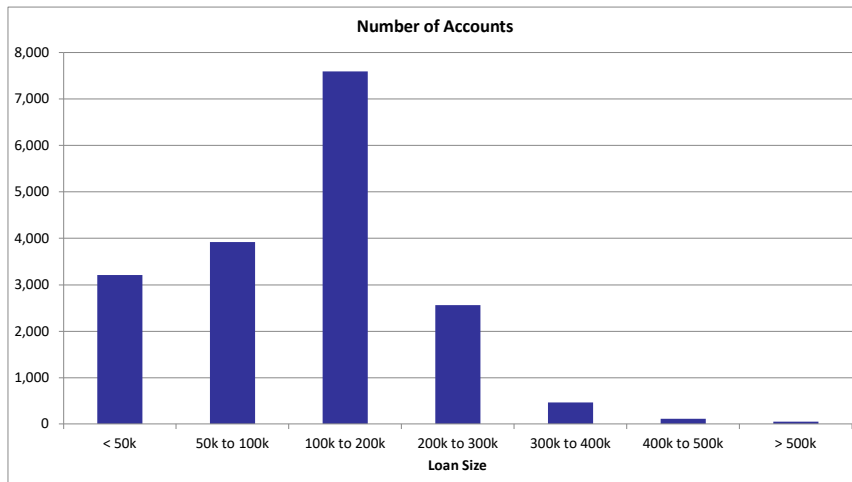
* 1+ Arrears includes loans in 3+ and 12+ Arrears

** 3+ Arrears includes loans in 12+ Arrears

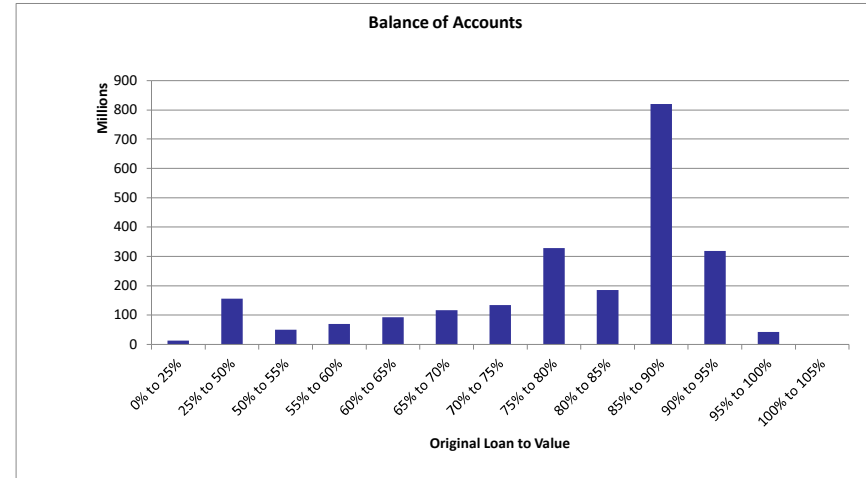
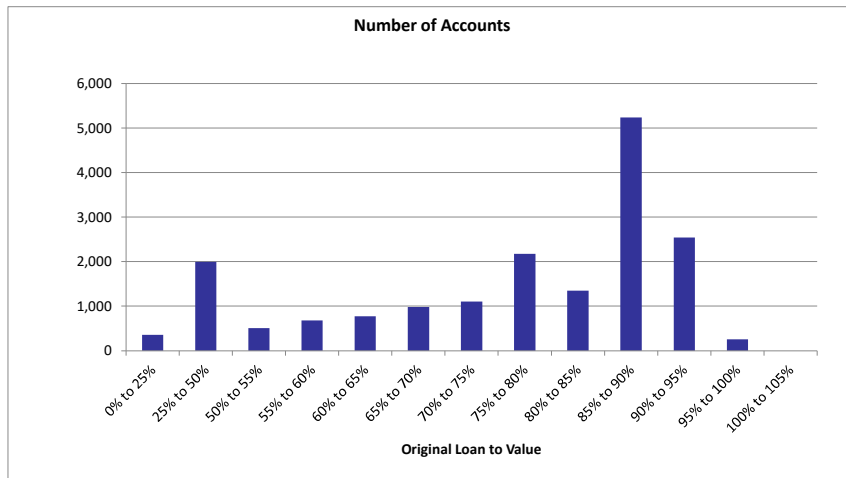


Cure Rates - Last 6 Months						
	Feb-24	Mar-24	Apr-24	May-24	Jun-24	Jul-24
Total Cases Any Arrears	226	245	218	211	220	218
Total Cured to 0 Arrears	33	39	57	33	22	37
% Cure Rate to 0 Arrears	14.60%	15.92%	26.15%	15.64%	10.00%	16.97%

Loan Size				
Loan Size	Number of Accounts	% Number of Accounts	Outstanding Balance	% of Total Outstanding Balance
< 50k	3,210	17.91%	76,073,777	3.27%
50k to 100k	3,919	21.87%	299,217,930	12.87%
100k to 200k	7,595	42.39%	1,103,628,969	47.46%
200k to 300k	2,561	14.29%	607,021,692	26.10%
300k to 400k	464	2.59%	156,084,764	6.71%
400k to 500k	116	0.65%	51,290,539	2.21%
> 500k	53	0.30%	32,087,059	1.38%
Total	17,918	100.00%	2,325,404,730	100.00%
Weighted Average Loan Size			129,780.37	

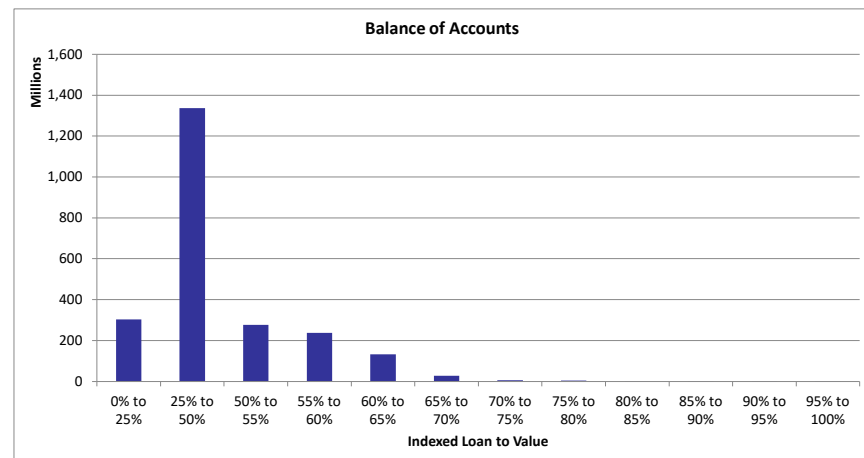
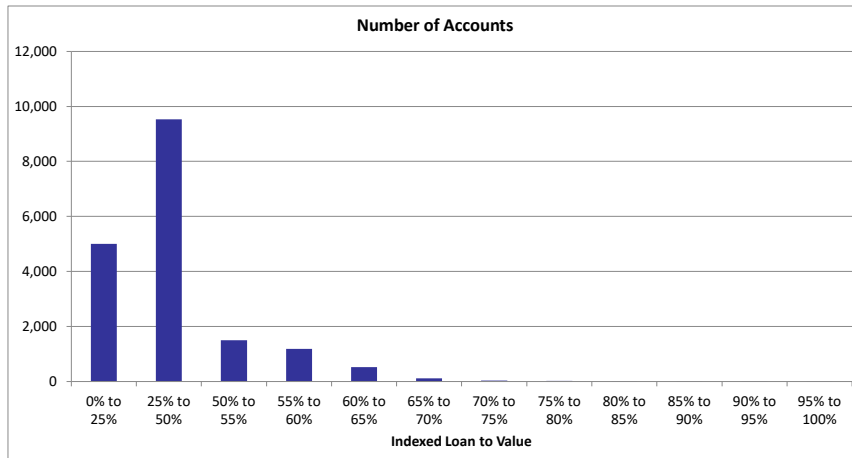


Original LTV				
Original LTV	Number of Accounts	% Number of Accounts	Outstanding Balance	% of Total Outstanding Balance
0% to 25%	355	1.98%	12,992,878	0.56%
25% to 50%	1,989	11.10%	155,616,121	6.69%
50% to 55%	506	2.82%	49,618,539	2.13%
55% to 60%	674	3.76%	69,513,905	2.99%
60% to 65%	773	4.31%	92,292,242	3.97%
65% to 70%	976	5.45%	116,087,261	4.99%
70% to 75%	1,099	6.13%	134,591,568	5.79%
75% to 80%	2,174	12.13%	328,517,651	14.13%
80% to 85%	1,345	7.51%	185,011,235	7.96%
85% to 90%	5,238	29.23%	820,315,663	35.28%
90% to 95%	2,538	14.16%	318,442,323	13.69%
95% to 100%	251	1.40%	42,405,343	1.82%
100% to 105%	0	0.00%	0	0.00%
Total	17,918	100.00%	2,325,404,730	100.00%
Weighted Average Original LTV			79.44%	

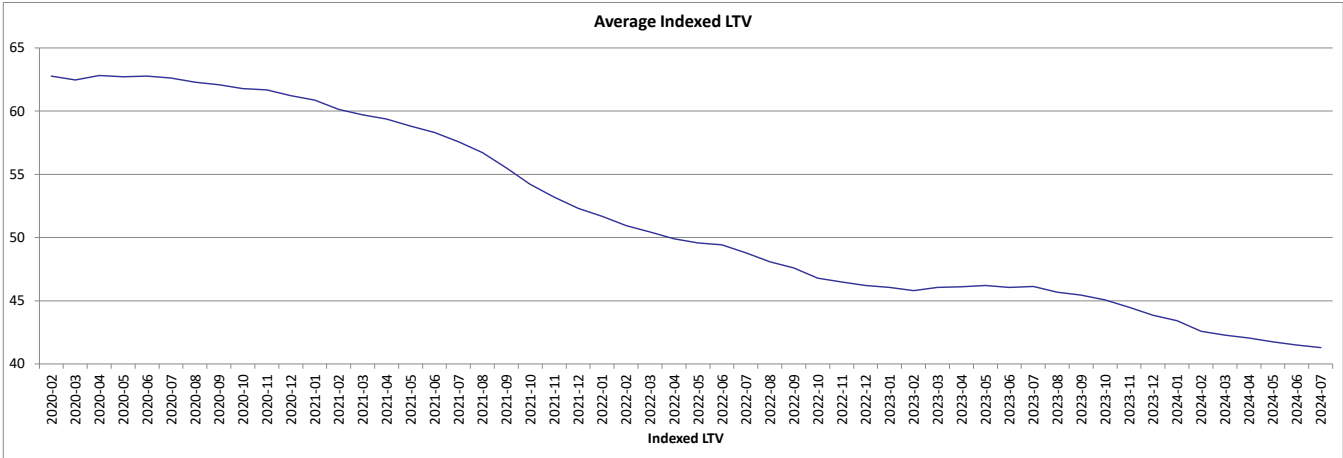


*OLTV for top-up loans is calculated by combining the original loan amount and the top-up loan amount. This does not take into account any reduction in the original loan amount that occurred prior to the top-up approval. The OLTV on top-up loans is therefore shown here as higher than the true exposure at the time the top-up was approved. The true exposure on all loans, including top-ups, was 100% or less at loan approval.

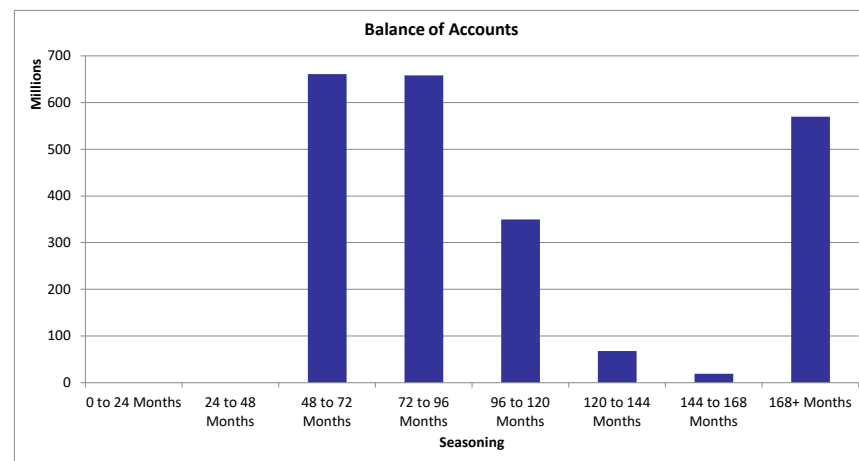
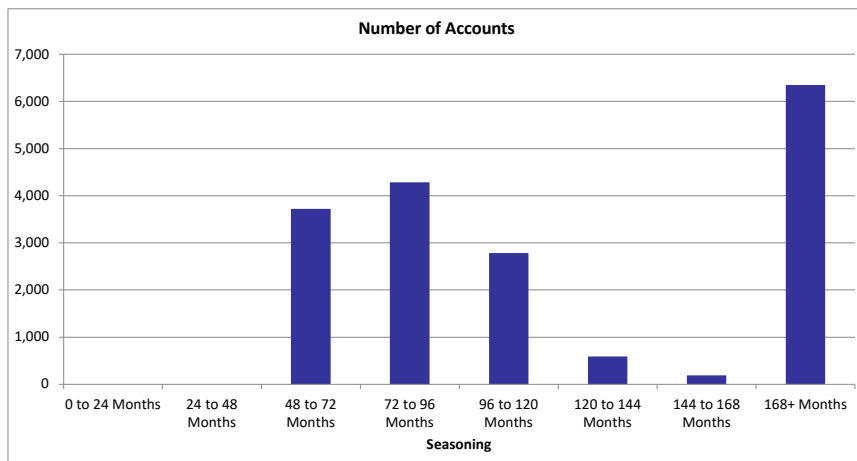
Indexed LTV				
Indexed LTV	Number of Accounts	% Number of Accounts	Outstanding Balance	% of Total Outstanding Balance
0% to 25%	4,999	27.90%	302,727,201	13.02%
25% to 50%	9,530	53.19%	1,335,882,537	57.45%
50% to 55%	1,502	8.38%	276,175,612	11.88%
55% to 60%	1,187	6.62%	237,820,681	10.23%
60% to 65%	524	2.92%	132,089,166	5.68%
65% to 70%	113	0.63%	28,220,025	1.21%
70% to 75%	25	0.14%	5,681,177	0.24%
75% to 80%	17	0.09%	3,728,963	0.16%
80% to 85%	5	0.03%	816,432	0.04%
85% to 90%	5	0.03%	797,597	0.03%
90% to 95%	3	0.02%	592,192	0.03%
95% to 100%	8	0.04%	873,147	0.04%
Total	17,918	100.00%	2,325,404,730	100.00%
Weighted Average Indexed LTV			41.30%	



Average Indexed LTV - Last 6 Months						
	Feb-24	Mar-24	Apr-24	May-24	Jun-24	Jul-24
Indexed LTV	42.60	42.29	42.06	41.76	41.49	41.30

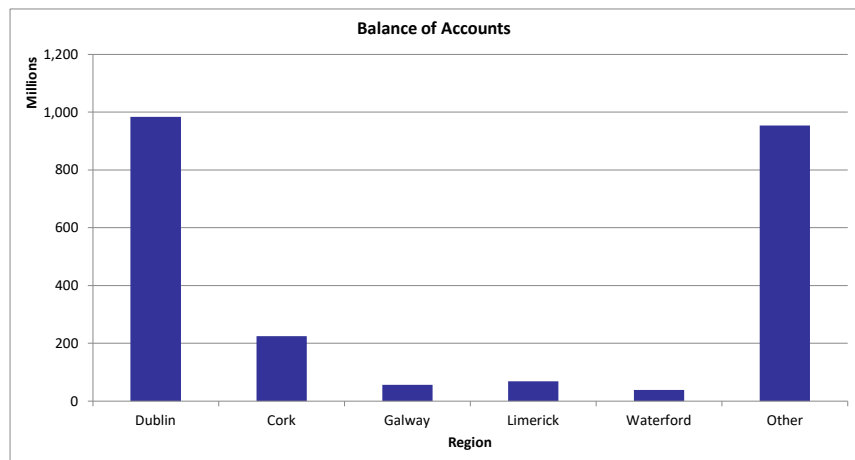
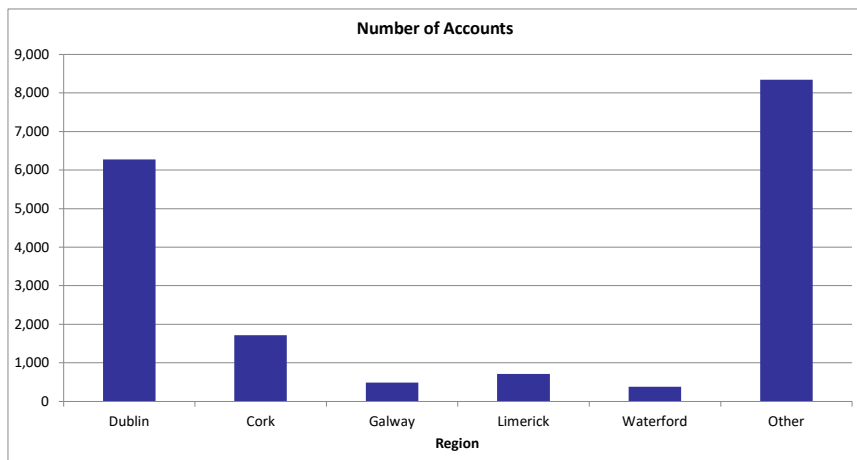


Seasoning				
Seasoning	Number of Accounts	% Number of Accounts	Outstanding Balance	% of Total Outstanding Balance
0 to 24 Months	0	0.00%	0	0.00%
24 to 48 Months	0	0.00%	0	0.00%
48 to 72 Months	3,723	20.78%	660,981,930	28.42%
72 to 96 Months	4,283	23.90%	658,076,423	28.30%
96 to 120 Months	2,784	15.54%	349,424,083	15.03%
120 to 144 Months	588	3.28%	67,908,751	2.92%
144 to 168 Months	191	1.07%	19,231,956	0.83%
168+ Months	6,349	35.43%	569,781,586	24.50%
Total	17,918	100.00%	2,325,404,730	100.00%
Weighted Average Seasoning			115.36	

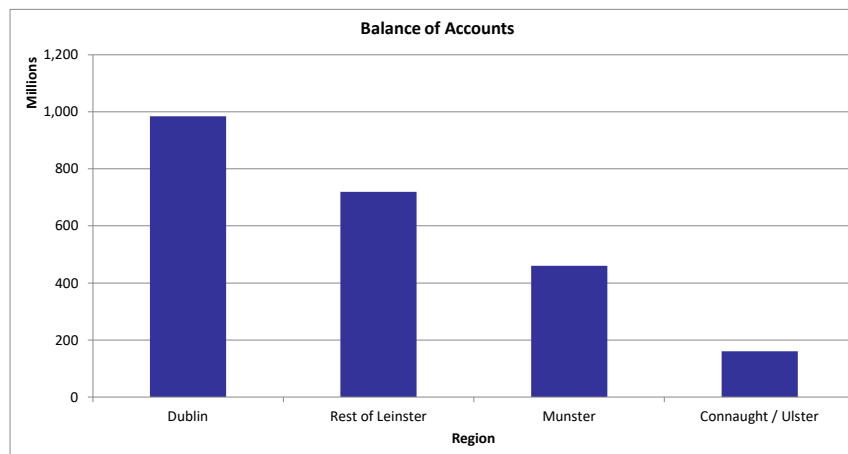
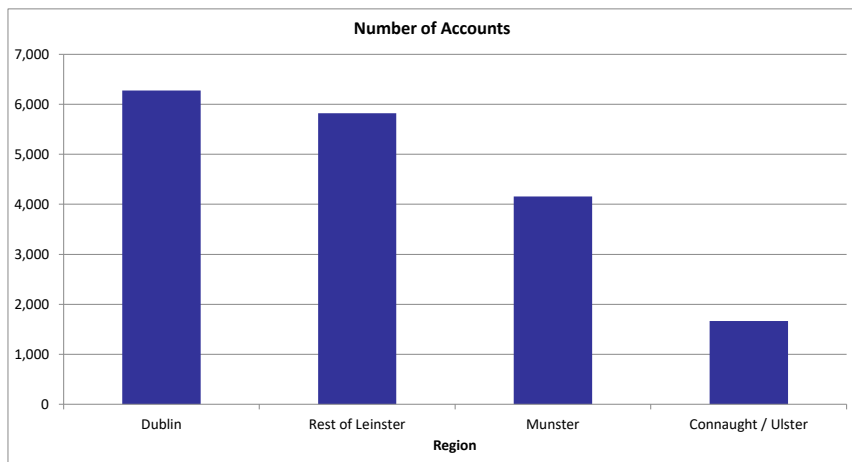


Property Area (County)				
County	Number of Accounts	% Number of Accounts	Outstanding Balance	% of Total Outstanding Balance
CARLOW	241	1.35%	24,311,664	1.05%
CAVAN	150	0.84%	14,747,375	0.63%
CLARE	451	2.52%	41,443,808	1.78%
CORK	1,717	9.58%	224,396,354	9.65%
DONEGAL	366	2.04%	28,395,338	1.22%
DUBLIN	6,274	35.02%	983,965,369	42.31%
GALWAY	489	2.73%	55,959,417	2.41%
KERRY	455	2.54%	44,073,918	1.90%
KILDARE	1,312	7.32%	183,025,833	7.87%
KILKENNY	243	1.36%	26,026,839	1.12%
LAOIS	284	1.58%	30,308,633	1.30%
LEITRIM	51	0.28%	4,283,169	0.18%
LIMERICK	714	3.98%	68,907,513	2.96%
LONGFORD	71	0.40%	5,775,229	0.25%
LOUTH	777	4.34%	86,184,132	3.71%
MAYO	232	1.29%	20,079,554	0.86%
MEATH	1,365	7.62%	178,705,530	7.68%
MONAGHAN	90	0.50%	9,081,562	0.39%
OFFALY	183	1.02%	17,970,520	0.77%
ROSCOMMON	101	0.56%	10,357,219	0.45%
SLIGO	187	1.04%	18,188,058	0.78%
TIPPERARY	433	2.42%	42,877,141	1.84%
WATERFORD	385	2.15%	38,687,323	1.66%
WESTMEATH	248	1.38%	25,175,593	1.08%
WEXFORD	365	2.04%	39,588,669	1.70%
WICKLOW	734	4.10%	102,888,971	4.42%
Total	17,918	100.00%	2,325,404,730	100.00%

Property Area (County)				
Major County	Number of Accounts	% Number of Accounts	Outstanding Balance	% of Total Outstanding Balance
Dublin	6,274	35.02%	983,965,369	42.31%
Cork	1,717	9.58%	224,396,354	9.65%
Galway	489	2.73%	55,959,417	2.41%
Limerick	714	3.98%	68,907,513	2.96%
Waterford	385	2.15%	38,687,323	1.66%
Other	8,339	46.54%	953,488,755	41.00%
Total	17,918	100.00%	2,325,404,730	100.00%

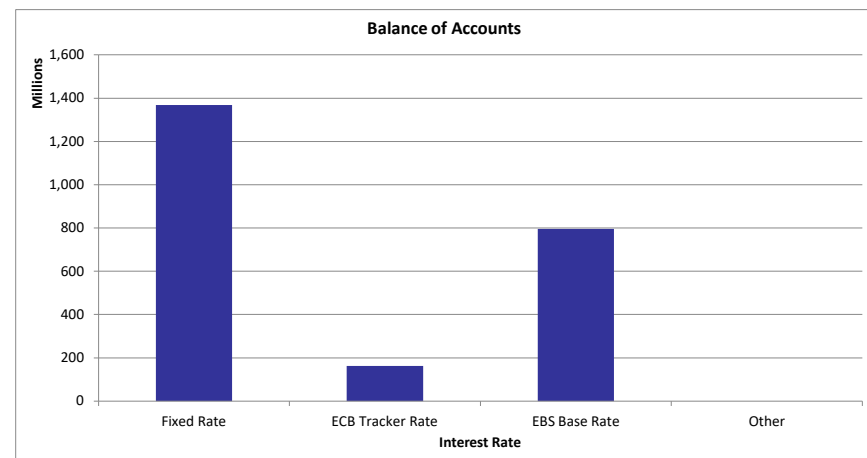
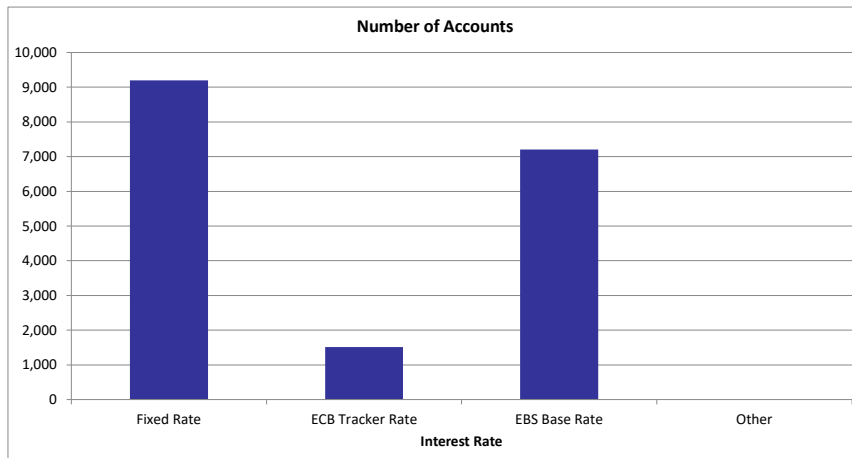


Property Area (Region)				
Region	Number of Accounts	% Number of Accounts	Outstanding Balance	% of Total Outstanding Balance
Dublin	6,274	35.02%	983,965,369	42.31%
Rest of Leinster	5,823	32.50%	719,961,613	30.96%
Munster	4,155	23.19%	460,386,057	19.80%
Connaught / Ulster	1,666	9.30%	161,091,692	6.93%
Total	17,918	100.00%	2,325,404,730	100.00%

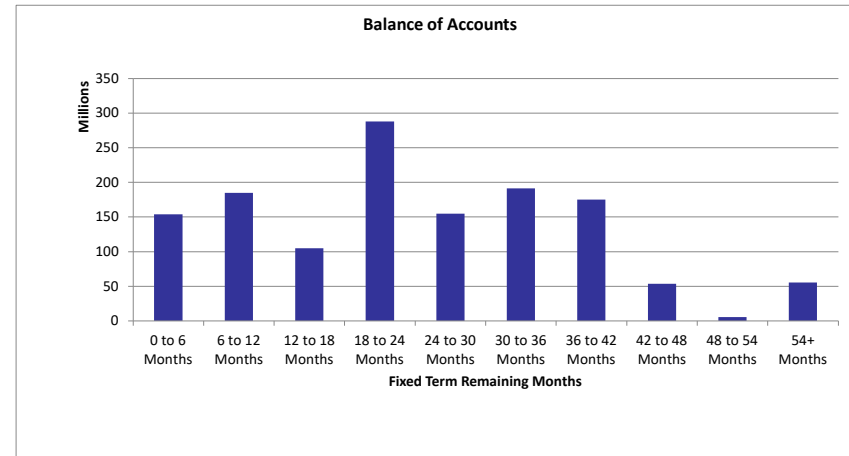
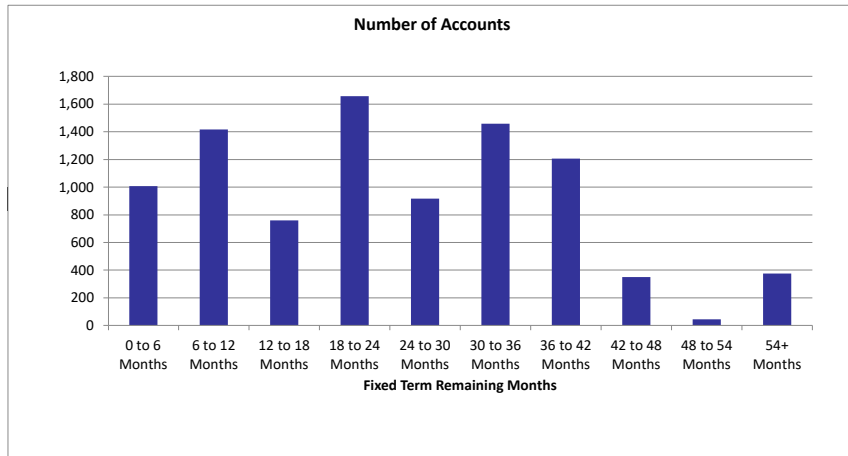


Interest Rate				
Interest Rate Type	Number of Accounts	% Number of Accounts	Outstanding Balance	% of Total Outstanding Balance
Fixed Rate	9,197	51.33%	1,368,003,212	58.83%
ECB Tracker Rate	1,515	8.46%	162,226,021	6.98%
EBS Base Rate	7,206	40.22%	795,175,497	34.20%
Other	0	0.00%	0	0.00%
Total	17,918	100.00%	2,325,404,730	100.00%

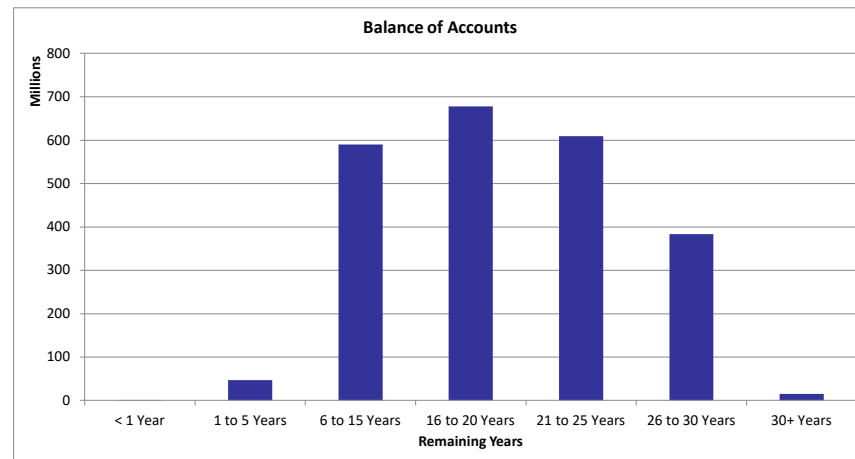
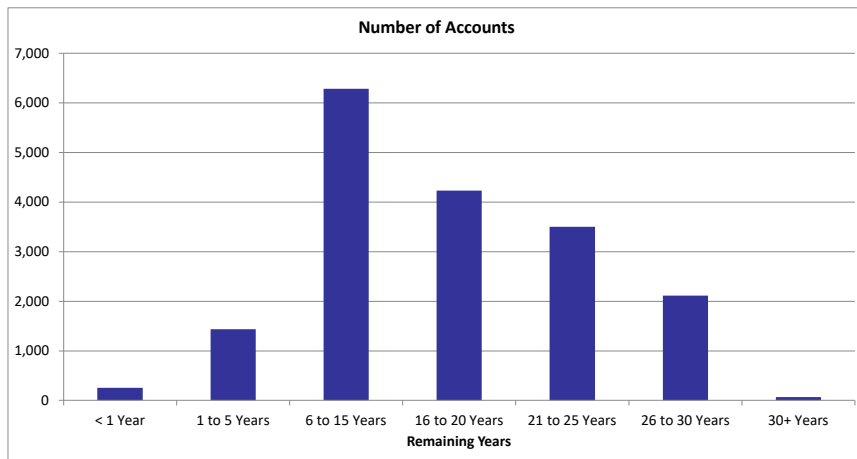
Interest Rate Type	Number of Accounts	Avg Interest Rate %
Fixed Rate	9,197	2.78
ECB Tracker Rate	1,515	5.39
EBS Base Rate	7,206	4.06
Other	0	0.00
Weighted Average Interest Rate		3.37



Fixed Term Remaining Months				
Fixed Term Remaining Months	Number of Accounts	% Number of Accounts	Outstanding Balance	% of Total Outstanding Balance
0 to 6 Months	1,008	10.96%	153,884,369	11.25%
6 to 12 Months	1,418	15.42%	185,075,582	13.53%
12 to 18 Months	759	8.25%	105,120,987	7.68%
18 to 24 Months	1,657	18.02%	288,090,256	21.06%
24 to 30 Months	918	9.98%	155,038,711	11.33%
30 to 36 Months	1,459	15.86%	191,409,672	13.99%
36 to 42 Months	1,207	13.12%	175,314,360	12.82%
42 to 48 Months	351	3.82%	53,387,136	3.90%
48 to 54 Months	45	0.49%	5,375,516	0.39%
54+ Months	375	4.08%	55,306,623	4.04%
Total	9,197	100.00%	1,368,003,212	100.00%
Weighted Fixed Term Remaining Months			25.22	

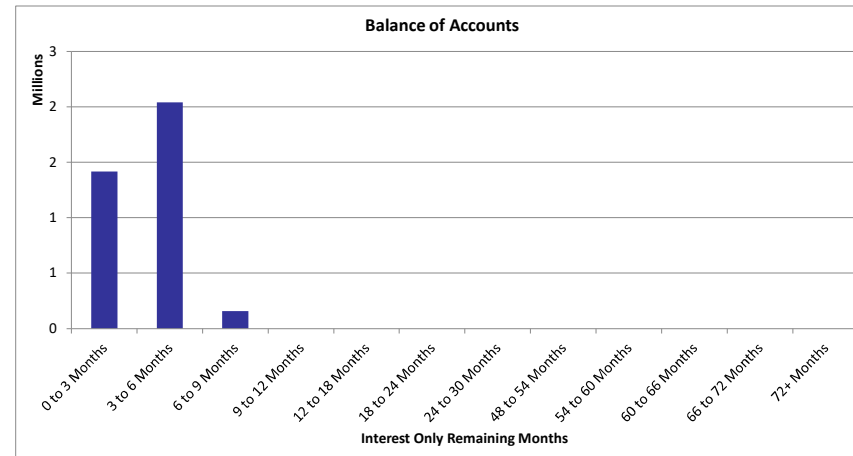
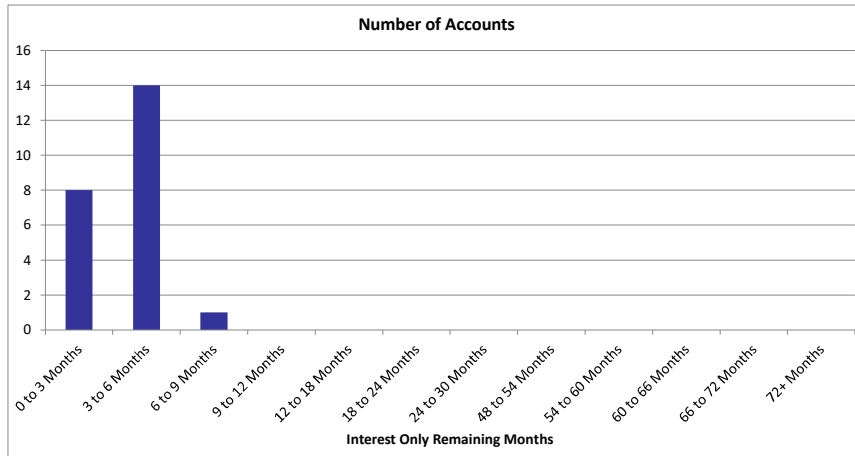


14. Remaining Years				
Remaining Years	Number of Accounts	% Number of Accounts	Outstanding Balance	% of Total Outstanding Balance
< 1 Year	260	1.45%	1,379,955	0.06%
1 to 5 Years	1,440	8.04%	47,378,217	2.04%
6 to 15 Years	6,287	35.09%	590,012,894	25.37%
16 to 20 Years	4,236	23.64%	677,863,885	29.15%
21 to 25 Years	3,506	19.57%	609,611,319	26.22%
26 to 30 Years	2,118	11.82%	383,642,095	16.50%
30+ Years	71	0.40%	15,516,363	0.67%
Total	17,918	100.00%	2,325,404,730	100.00%
Weighted Average Remaining Years			18.73	



15. Repayments Status				
Principal Repayments Status	Number of Accounts	% Number of Accounts	Outstanding Balance	% of Total Outstanding Balance
Principal and Interest	17,895	99.87%	2,321,789,656	99.84%
Interest Only (Standard)	23	0.13%	3,615,075	0.16%
Total	17,918	100.00%	2,325,404,730	100.00%

Interest Only (Standard) Remaining Term				
Interest Only (Standard) Remaining Term	Number of Accounts	% Number of Accounts	Outstanding Balance	% of Total Outstanding Balance
0 to 3 Months	8	34.78%	1,417,082	39.20%
3 to 6 Months	14	60.87%	2,038,976	56.40%
6 to 9 Months	1	4.35%	159,016	4.40%
9 to 12 Months	0	0.00%	0	0.00%
12 to 18 Months	0	0.00%	0	0.00%
18 to 24 Months	0	0.00%	0	0.00%
24 to 30 Months	0	0.00%	0	0.00%
48 to 54 Months	0	0.00%	0	0.00%
54 to 60 Months	0	0.00%	0	0.00%
60 to 66 Months	0	0.00%	0	0.00%
66 to 72 Months	0	0.00%	0	0.00%
72+ Months	0	0.00%	0	0.00%
Total	23	100.00%	3,615,075	100.00%
Weighted Average Interest Only (Standard) Remaining Term			2.88	



Occupancy Status				
Occupancy Status	Number of Accounts	% Number of Accounts	Outstanding Balance	% of Total Outstanding Balance
HOMELOAN	17,907	99.94%	2,323,928,173	99.94%
RETAIL BTL	11	0.06%	1,476,557	0.06%
Total	17,918	100.00%	2,325,404,730	100.00%