

Investor Report: Burlington Mortgages No. 1 Designated Activity Company

From:	AIB
Month Ending:	31/08/2021
Interest Payments Date:	20/09/2021

Investor Contacts			
Mark Whelan	Head of AIB Term Funding & Collateral Management	00353 1 641 7164	mark.a.whelan@aib.ie
Jonathan Lynch	Manager, AIB Collateral Management Unit	00353 1 641 7195	jonathan.d.lynch@aib.ie

PCS ID	00109-STs term
ESMA Reference	635400DJAT971ZDCJN35N2020001
Legal Entity Identifier	635400DJAT971ZDCJN35
European Data Warehouse	RMBSIE000145100420208

Deal Participation Information	
Party	Provider
Issuer	Burlington Mortgages No.1 Designated Activity Company
Sellers	EBS d.a.c. & Haven Mortgages Limited
Cash Manager	EBS d.a.c.
Issuer Account Bank	AIB plc
Collection Account Bank	AIB plc
Trustee	BNY Mellon Corporate Trustee Services Limited
Principal Paying Agent & Reference Agent	The Bank of New York Mellon, London Branch
Registrar	The Bank of New York Mellon, Luxembourg Branch
Corporate Services Provider	Intertrust Management Ireland Limited
Back-Up Servicer Facilitator	Intertrust Management Ireland Limited
Subordinated Loan Providers	EBS d.a.c. & Haven Mortgages Limited
Share Trustee	Intertrust Nominees (Ireland) Limited
Arranger	Merrill Lynch International ("BofA Securities")

Details of Notes Issued												
Class of Notes	Reference	Original Moody's Rating	Original DBRS Rating	Current Moody's Rating	Current DBRS Rating	Original Tranche Balance (Euro)	Issue Price	Reference Rate	Margin (up to & including First Optional Redemption Date)	Step-Up Margin (after First Optional Redemption Date)	First Optional Redemption Date	Final Maturity Date
A1 Notes	XS2131184983	Aaa	AAA	Aaa	AAA	€ 1,731,400,000	100%	1 Month EURIBOR	0.40%	n/a	0.80%	Mar-2025
A2 Notes	XS2131185014	Aaa	AAA	Aaa	AAA	€ 1,731,400,000	100%	0.35% Fixed	n/a	n/a	n/a	Nov-2058
B Notes	XS2131185105	Aa2	AA(lo)	Aa1	AA	€ 201,300,000	100%	1 Month EURIBOR	0.95%	1.90%	Mar-2025	Nov-2058
C Notes	XS2131185873	A1	A(lo)	Aa2	A	€ 110,700,000	100%	1 Month EURIBOR	1.35%	2.35%	Mar-2025	Nov-2058
D Notes	XS2131186848	Baa3	BBB(lo)	A2	BBB	€ 110,700,000	100%	1 Month EURIBOR	1.75%	2.75%	Mar-2025	Nov-2058
E Notes	XS2131189511	B3	BB	Ba2	BB	€ 80,500,000	100%	1 Month EURIBOR	2.75%	3.75%	Mar-2025	Nov-2058
Z Notes	XS2131190956	n/a	n/a	n/a	n/a	€ 60,500,000	100%	8.00% Fixed	n/a	n/a	Mar-2025	Nov-2058
R1A Notes	XS2132421137	n/a	n/a	n/a	n/a	€ 10,000	100%	n/a	n/a	n/a	Mar-2025	Nov-2058
R1B Notes	XS2132421301	n/a	n/a	n/a	n/a	€ 10,000	100%	n/a	n/a	n/a	Mar-2025	Nov-2058
R2A Notes	XS2132421483	n/a	n/a	n/a	n/a	€ 10,000	100%	n/a	n/a	n/a	Mar-2025	Nov-2058
R2B Notes	XS2132421566	n/a	n/a	n/a	n/a	€ 10,000	100%	n/a	n/a	n/a	Mar-2025	Nov-2058

Deal Information	
Issue Date	16/03/2020
First Distribution Date	20/04/2020
Minimum Denominations (Euro)	100,000
Payments Frequency	Monthly
Interest Calculation	Actual / 360

This Report	
Interest Period Start Date	20/08/2021
Interest Period End Date	20/09/2021
No of days in Interest Period	31
Next Payments Date	20/10/2021

Principal Payments on Notes										
Class of Notes	Reference	Original Balance (Euro)	% of Notes	Opening Balance (Euro)	% of Notes	Amortisation (Euro)	Closing Balance (Euro)	% of Notes	Opening Pool Factor	Closing Pool Factor
A1 Notes	XS2131184983	1,731,400,000	42.9997%	1,106,283,379	32.5241%	(39,202,142)	1,067,081,237	31.7374%	0.64	0.62
A2 Notes	XS2131185014	1,731,400,000	42.9997%	1,731,400,000	50.9022%	0	1,731,400,000	51.4957%	1.00	1.00
B Notes	XS2131185105	201,300,000	4.9993%	201,300,000	5.9181%	0	201,300,000	5.9871%	1.00	1.00
C Notes	XS2131185873	110,700,000	2.7493%	110,700,000	3.2545%	0	110,700,000	3.2925%	1.00	1.00
D Notes	XS2131186848	110,700,000	2.7493%	110,700,000	3.2545%	0	110,700,000	3.2925%	1.00	1.00
E Notes	XS2131189511	80,500,000	1.9992%	80,500,000	2.3667%	0	80,500,000	2.3943%	1.00	1.00
Z Notes	XS2131190956	60,500,000	1.5025%	60,500,000	1.7787%	0	60,500,000	1.7994%	1.00	1.00
R1A Notes	XS2132421137	10,000	0.0002%	10,000	0.0003%	0	10,000	0.0003%	1.00	1.00
R1B Notes	XS2132421301	10,000	0.0002%	10,000	0.0003%	0	10,000	0.0003%	1.00	1.00
R2A Notes	XS2132421483	10,000	0.0002%	10,000	0.0003%	0	10,000	0.0003%	1.00	1.00
R2B Notes	XS2132421566	10,000	0.0002%	10,000	0.0003%	0	10,000	0.0003%	1.00	1.00
Total		4,026,540,000	100%	3,401,423,379	100.0000%	(39,202,142)	3,362,221,237	100.0000%	0.84	0.84

Interest Payments on Notes							
Class of Notes	Reference	Interest Rate	Number of Days	Interest Due (Euro)	Interest Paid (Euro)	Unpaid Interest (Euro)	Cumulative Unpaid (Euro)
A1 Notes	XS2131184983	0.000%	31	-	-	0	0
A2 Notes	XS2131185014	0.350%	31	521,824.72	521,824.72	0	0
B Notes	XS2131185105	0.392%	31	67,949.93	67,949.93	0	0
C Notes	XS2131185873	0.792%	31	75,497.40	75,497.40	0	0
D Notes	XS2131186848	1.192%	31	113,627.40	113,627.40	0	0
E Notes	XS2131189511	2.192%	31	151,948.22	151,948.22	0	0
Z Notes	XS2131190956	8.000%	31	416,777.77	416,777.77	0	0
R1A Notes	XS2132421137	n/a	n/a	n/a	n/a	n/a	n/a
R1B Notes	XS2132421301	n/a	n/a	n/a	n/a	n/a	n/a
R2A Notes	XS2132421483	n/a	n/a	n/a	n/a	n/a	n/a
R2B Notes	XS2132421566	n/a	n/a	n/a	n/a	n/a	n/a
Total				1,347,625.44	1,347,625.44	-	-

General Credit Structure							
Description	Original Balance (Euro)	Opening Balance (Euro)	Drawings in Month (Euro)	Replenished in Month (Euro)	Closing Balance (Euro)	Balance Required (Euro)	Deficit (Euro)
General Reserve Fund	3,774,000	3,774,000	-	-	3,774,000	3,774,000	-
Liquidity Reserve Fund	25,971,000	21,282,625	(294,016)	-	20,988,609	20,988,609	-
Total	29,745,000	25,056,625	(294,016)	-	24,762,609	24,762,609	-

Revenue Analysis	
	Euro
Revenue Receipts	8,295,292
Interest from Bank Accounts	0
Class A Liquidity Reserve Fund Excess Amount	294,016
Class A Redemption Date, Class A Liquidity Reserve Amount	0
General Reserve Fund Excess Amount	0
Other Net Income, excluding Principal Receipts	0
Principal Deficiency Excess Revenue Amounts	0
less:	
Payments to the Sellers	0
Tax Payments, excluding amounts due on the Issuer Profit Ledger	0
Available Revenue Receipts	8,589,308
Allocation of Available Revenue Receipts	
Trustee	0
Amounts due to the Reference Agent,	0
the Registrar,	0
the paying Agent,	0
the Cash Manager,	(1,458)
the Back-Up Servicer Facilitator,	0
the Corporate Services Provider,	0
the Issuer Account Bank	(35,058)
any amounts payable by the Issuer to third parties	0
Servicer (EBS)	(304,740)
Servicer (Haven)	(165,089)
Issuer Profit Fee	(100)
Class A Notes Interest	(521,825)
Class A Liquidity Reserve Fund Required Amount	0
Class A Principal Deficiency Sub-Ledger	0
Class B Notes Interest	(67,950)
Class B Principal Deficiency Sub-Ledger	0
Class C Notes Interest	(75,497)
Class C Principal Deficiency Sub-Ledger	0
Class D Notes Interest	(113,627)
Class D Principal Deficiency Sub-Ledger	0
Class E Notes Interest	(151,948)
Class E Principal Deficiency Sub-Ledger	0
General Reserve Fund Required Amount	0
Class Z Principal Deficiency Sub-Ledger	49,483
Class Z Notes Interest	(416,778)
On or after the First Optional Redemption Date or the Early Redemption Date, amounts to redeem the Rated Notes	0
Subordinated Loan Interest (EBS)	0
Subordinated Loan Interest (Haven)	0
Subordinated Loan Principal (EBS)	0
Subordinated Loan Principal (Haven)	0
Amounts to be credited to the Deposit Account to be applied on the next Interest Payment Date as Available Revenue Receipts	0
Class R1A Payment	(4,398,243)
Class R1B Payment	(2,386,477)
Class R1 Principal Payment	0
Class R2A Payment	0
Class R2B Payment	0
Reconciliation	0

Principal Deficiency Ledger							
Class of Notes	Reference	Opening Balance (Euro)	Increase in Losses (Euro)	Decrease in Losses (Euro)	Net Losses (Euro)	Allocation of Revenue Receipts	Closing Balance (Euro)
A1 Notes	XS2131184983	0	0	0		0	0
A2 Notes	XS2131185014	0	0	0		0	0
B Notes	XS2131185105	0	0	0		0	0
C Notes	XS2131185873	0	0	0		0	0
D Notes	XS2131186848	0	0	0		0	0
E Notes	XS2131189511	0	0	0		0	0
Z Notes	XS2131190956	-	55,367	(104,851)	(49,483)	(49,483)	-

Principal Deficiency Ledger					
Class of Notes	Reference	Cumulative Increase in Losses (Euro)	Cumulative Decrease in Losses (Euro)	Cumulative Net Losses (Euro)	Cumulative Allocation of Revenue Receipts
A1 Notes	XS2131184983	0	0		0
A2 Notes	XS2131185014	0	0		0
B Notes	XS2131185105	0	0		0
C Notes	XS2131185873	0	0		0
D Notes	XS2131186848	0	0		0
E Notes	XS2131189511	0	0		0
Z Notes	XS2131190956	1,881,100	(1,105,745)	775,356	775,356

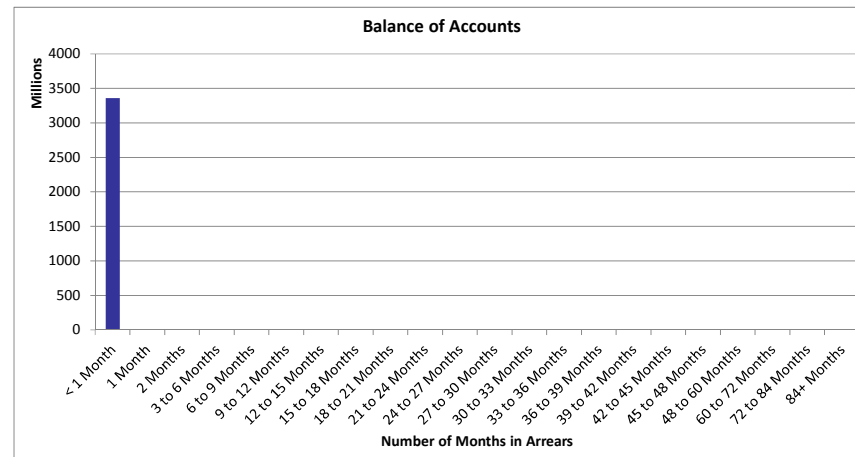
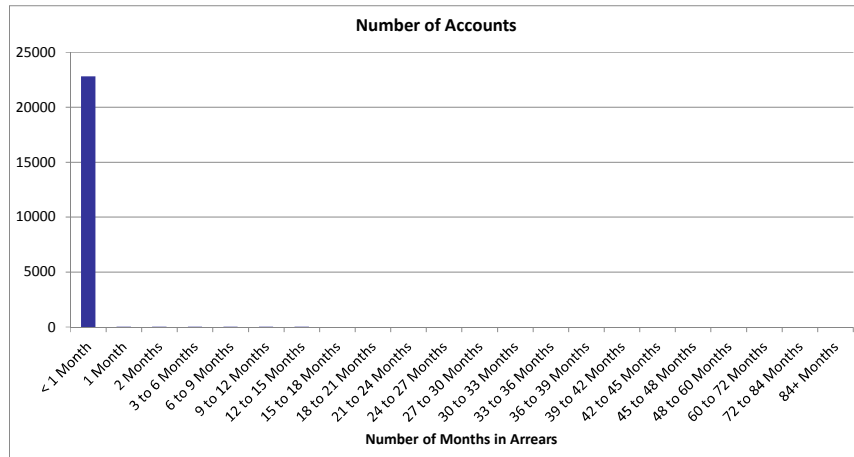
Principal Analysis		Euro
Principal Receipts		39,251,625
Proceeds of issue of the Class R1 Notes and the Class R2 Note		0
Any credit to the Principal Deficiency Ledgers		(49,483)
Any other Available Principal receipts		0
The excess of the proceeds of the Collateralised Notes over the Consideration		0
Optional Purchase Price upon sale of the Portfolio further to exercise of the Call Option		0
less:		
Available Principal Receipts applied as Principal Deficiency Excess Revenue Amounts		0
Available Principal		39,202,142
Allocation of Available Principle		
Principal Addition Amounts to be applied to meet any Senior Expenses Deficit;		0
Pro rata and pari passu to the principal amounts due on the Class A1 Notes;		(39,202,142)
Pro rata and pari passu to the principal amounts due on the Class A2 Notes;		0
Pro rata and pari passu to the principal amounts due on the Class B Notes;		0
Pro rata and pari passu to the principal amounts due on the Class C Notes;		0
Pro rata and pari passu to the principal amounts due on the Class D Notes;		0
Pro rata and pari passu to the principal amounts due on the Class E Notes;		0
Pro rata and pari passu to the principal amounts due on the Class Z Notes;		0
Principal amount due on the Class R2 Notes		0
All remaining amounts to be applied as Available Revenue Receipts		0
Reconciliation		0

Mortgage Portfolio Analysis: Properties Under Management					
	This Period		Cumulative (Active Loans only)		Cumulative Active and Redeemed Loans
Description	No of Properties	Principal Balance Amount	No of Properties	Principal Balance Amount	Number of Properties
Abandoned	0	0.00	0	0.00	0
Property in Possession	0	0.00	0	0.00	0
Sold	0	0.00	0	0.00	0

Mortgage Portfolio Analysis		
	This Period (Euro)	Cumulative (Euro)
Opening Mortgage Principle Balance	3,410,053,313	4,026,483,467
Scheduled Principal Payments and Early Redemptions	39,251,625	663,486,874
Charge Offs	0	0
Non-cash movements	0	(8,521,962)
Mortgages Repurchased by Sellers	0	716,867
Closing Mortgage Principal Balance	3,370,801,688	3,370,801,688

Stratification Tables

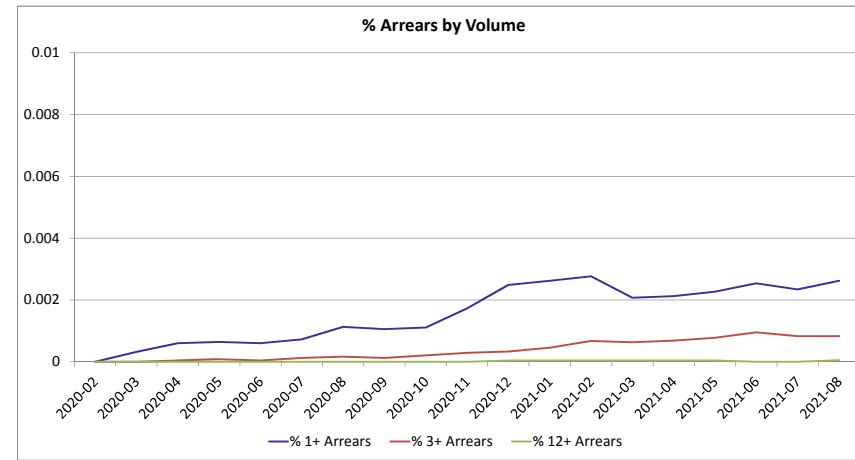
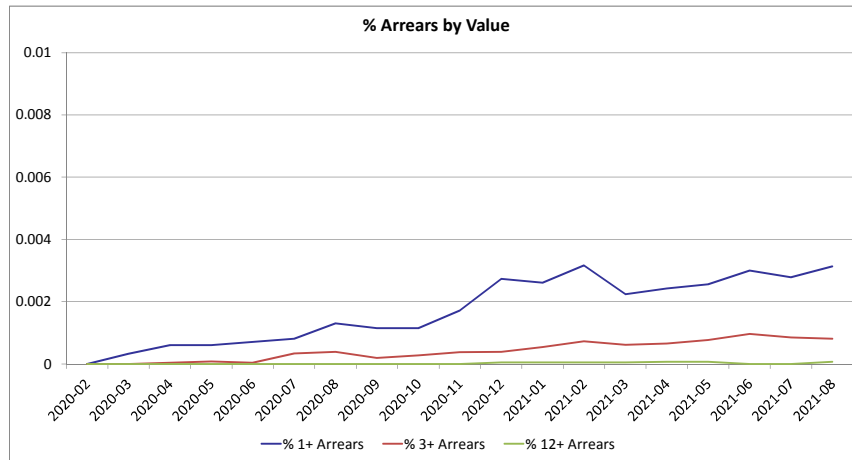
Number of Repayments in Arrears				
Number of Months In Arrears	Number of Accounts	% Number of Accounts	Outstanding Balance	% of Total Outstanding Balance
< 1 Month	22,824	99.74%	3,360,251,321	99.69%
1 Month	30	0.13%	5,972,545	0.18%
2 Months	11	0.05%	1,844,878	0.05%
3 to 6 Months	12	0.05%	1,615,582	0.05%
6 to 9 Months	4	0.02%	472,131	0.01%
9 to 12 Months	2	0.01%	423,760	0.01%
12 to 15 Months	1	0.00%	221,470	0.01%
15 to 18 Months	0	0.00%	0	0.00%
18 to 21 Months	0	0.00%	0	0.00%
21 to 24 Months	0	0.00%	0	0.00%
24 to 27 Months	0	0.00%	0	0.00%
27 to 30 Months	0	0.00%	0	0.00%
30 to 33 Months	0	0.00%	0	0.00%
33 to 36 Months	0	0.00%	0	0.00%
36 to 39 Months	0	0.00%	0	0.00%
39 to 42 Months	0	0.00%	0	0.00%
42 to 45 Months	0	0.00%	0	0.00%
45 to 48 Months	0	0.00%	0	0.00%
48 to 60 Months	0	0.00%	0	0.00%
60 to 72 Months	0	0.00%	0	0.00%
72 to 84 Months	0	0.00%	0	0.00%
84+ Months	0	0.00%	0	0.00%
Total	22,884	100.00%	3,370,801,688	100.00%



Repayments in Arrears - Last 6 Months						
Months in Arrears Value of Accounts (€m)	Mar-21	Apr-21	May-21	Jun-21	Jul-21	Aug-21
12+ Arrears	0.16	0.23	0.23	0.00	0.00	0.22
3+ Arrears**	2.19	2.31	2.67	3.32	2.90	2.73
1+ Arrears*	7.95	8.54	8.92	10.34	9.51	10.55
Total Arrears	7.95	8.54	8.92	10.34	9.51	10.55
Total Portfolio	3,555.43	3,520.66	3,487.67	3,447.81	3,410.05	3,370.80
Months in Arrears Number of Accounts	Mar-21	Apr-21	May-21	Jun-21	Jul-21	Aug-21
12+ Arrears	1	1	1	0	0	1
3+ Arrears**	15	16	18	22	19	19
1+ Arrears*	49	50	53	59	54	60
Total Arrears	49	50	53	59	54	60
Total Portfolio	23,692	23,539	23,400	23,241	23,061	22,884

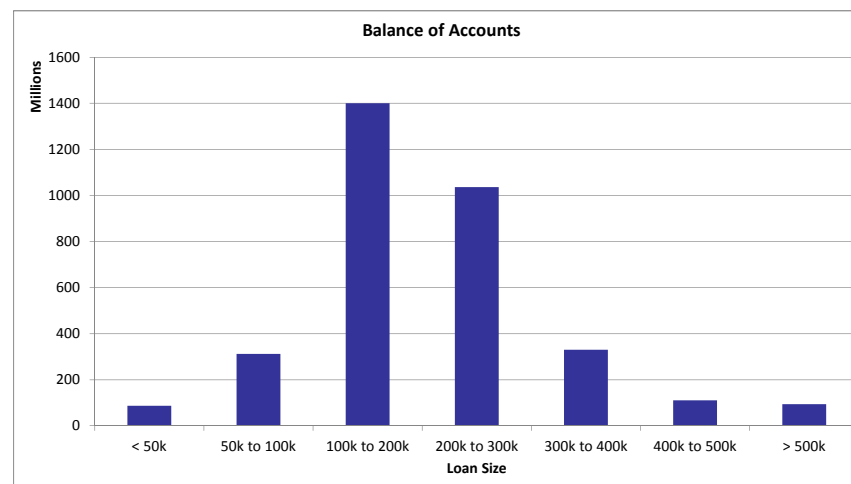
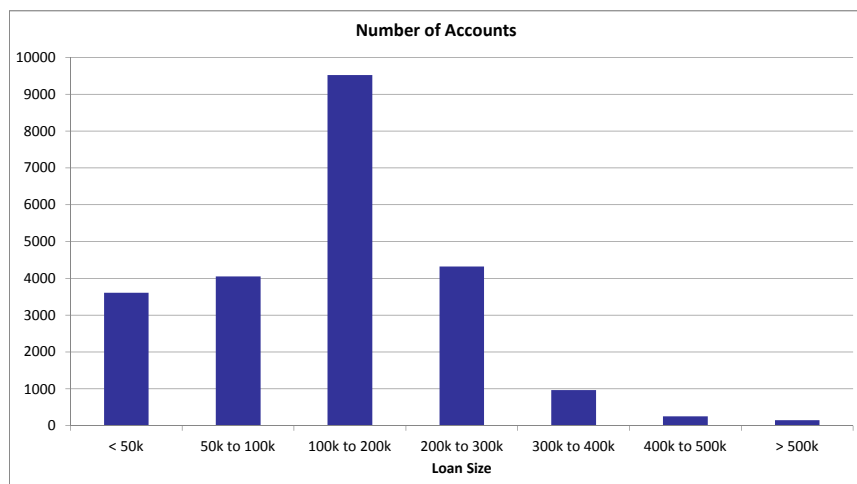
* 1+ Arrears includes loans in 3+ and 12+ Arrears

** 3+ Arrears includes loans in 12+ Arrears

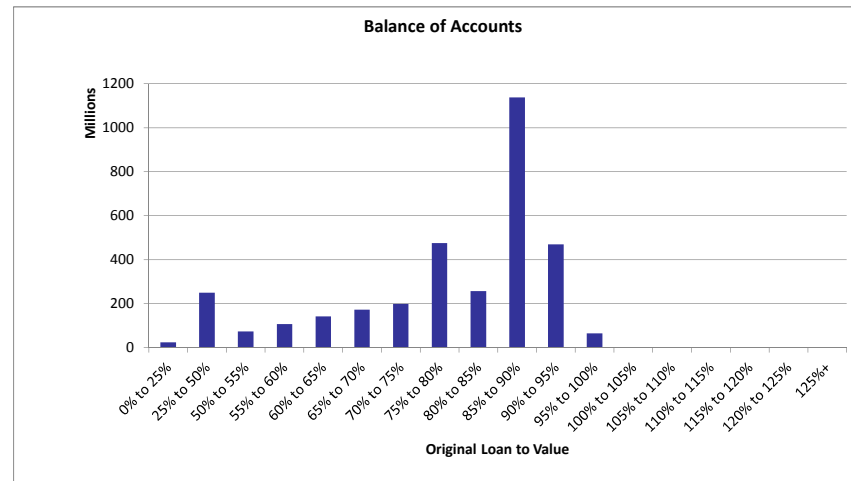
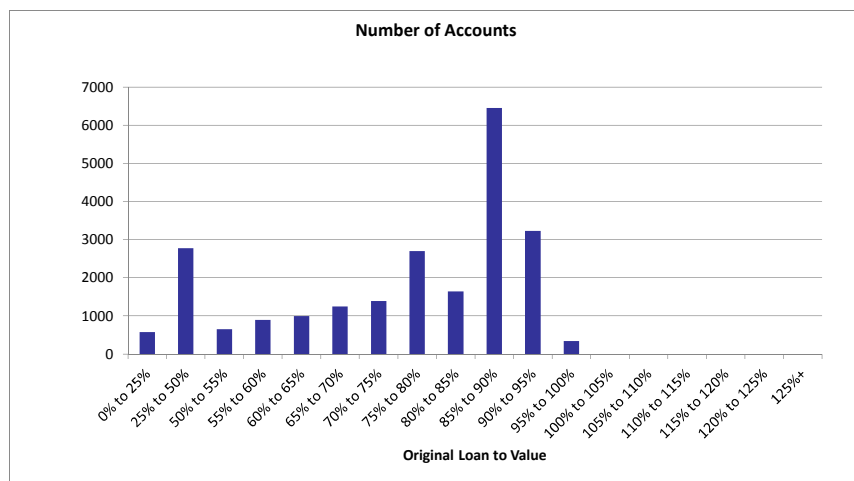


Cure Rates - Last 6 Months						
	Mar-21	Apr-21	May-21	Jun-21	Jul-21	Aug-21
Total Cases Any Arrears	80	79	81	87	94	86
Total Cured to 0 Arrears	49	19	14	20	20	28
% Cure Rate to 0 Arrears	61.25%	24.05%	17.28%	22.99%	21.28%	32.56%

Loan Size				
Loan Size	Number of Accounts	% Number of Accounts	Outstanding Balance	% of Total Outstanding Balance
< 50k	3,613	15.79%	86,417,151	2.56%
50k to 100k	4,053	17.71%	312,589,945	9.27%
100k to 200k	9,516	41.58%	1,400,527,872	41.55%
200k to 300k	4,325	18.90%	1,036,589,708	30.75%
300k to 400k	972	4.25%	329,741,427	9.78%
400k to 500k	252	1.10%	110,613,676	3.28%
> 500k	153	0.67%	94,321,908	2.80%
Total	22,884	100.00%	3,370,801,688	100.00%
Weighted Average Loan Size			147,299.50	

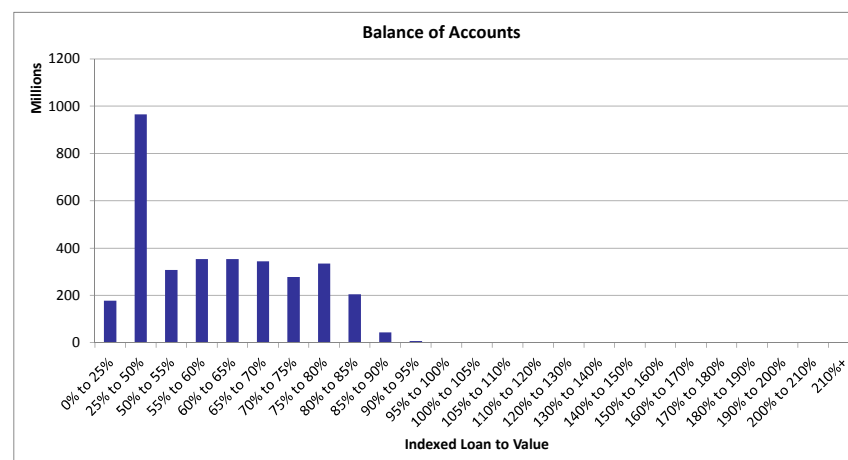
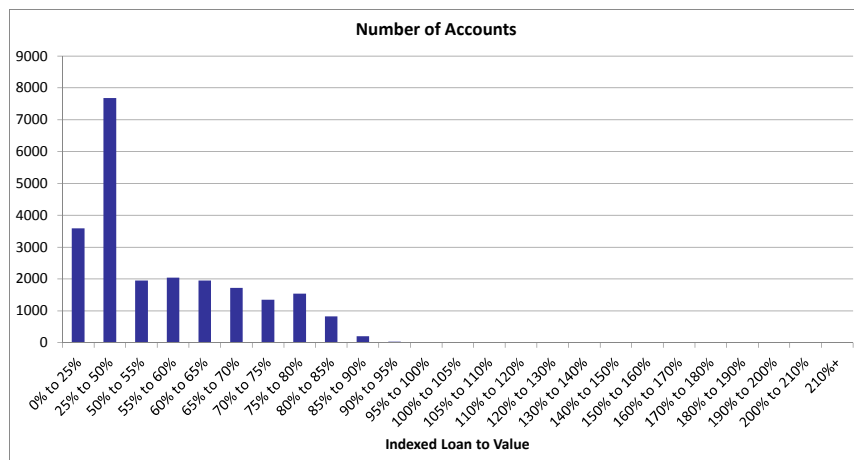


Original LTV				
Original LTV	Number of Accounts	% Number of Accounts	Outstanding Balance	% of Total Outstanding Balance
0% to 25%	578	2.53%	24,164,466	0.72%
25% to 50%	2,773	12.12%	249,721,616	7.41%
50% to 55%	654	2.86%	73,544,959	2.18%
55% to 60%	891	3.89%	107,150,058	3.18%
60% to 65%	998	4.36%	141,151,748	4.19%
65% to 70%	1,245	5.44%	172,785,042	5.13%
70% to 75%	1,392	6.08%	198,453,512	5.89%
75% to 80%	2,697	11.79%	474,364,623	14.07%
80% to 85%	1,642	7.18%	257,303,681	7.63%
85% to 90%	6,448	28.18%	1,138,244,315	33.77%
90% to 95%	3,225	14.09%	469,675,449	13.93%
95% to 100%	341	1.49%	64,242,218	1.91%
100% to 105%	0	0.00%	0	0.00%
Total	22,884	100.00%	3,370,801,688	100.00%
Weighted Average Original LTV			78.83%	

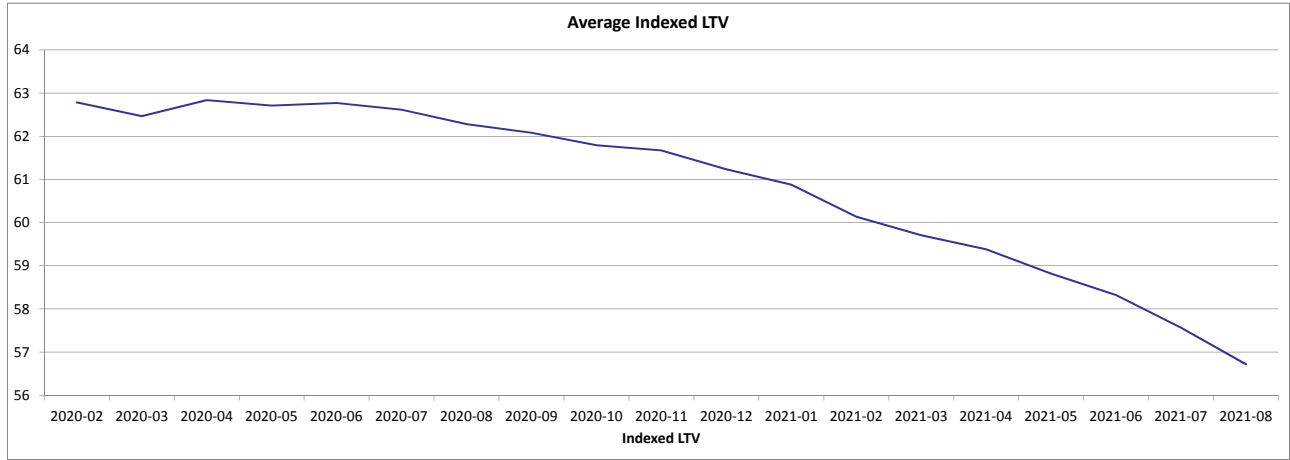


*OLTV for top-up loans is calculated by combining the original loan amount and the top-up loan amount. This does not take into account any reduction in the original loan amount that occurred prior to the top-up approval. The OLTV on top-up loans is therefore shown here as higher than the true exposure at the time the top-up was approved. The true exposure on all loans, including top-ups, was 100% or less at loan approval.

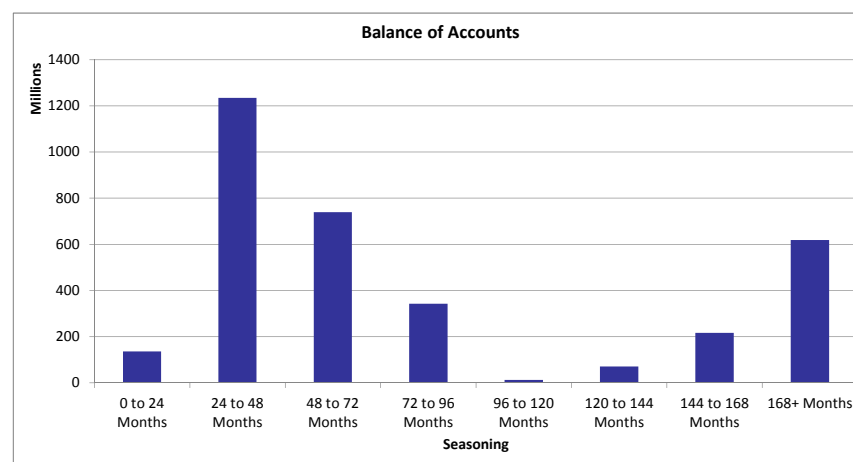
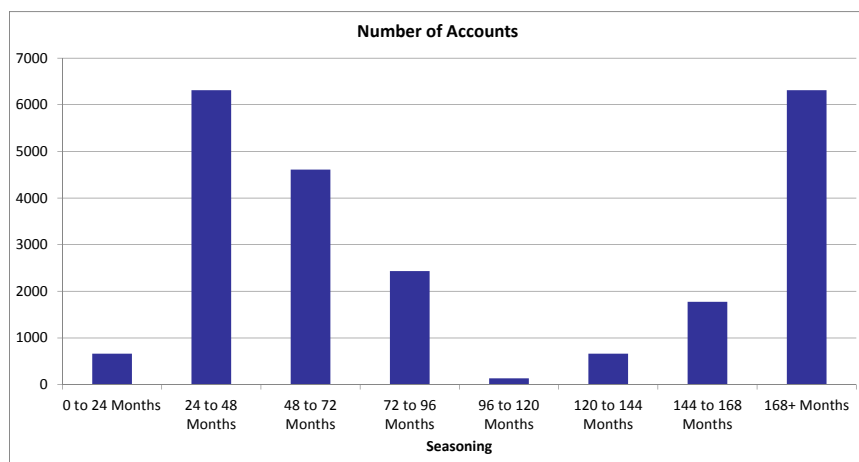
Indexed LTV				
Indexed LTV	Number of Accounts	% Number of Accounts	Outstanding Balance	% of Total Outstanding Balance
0% to 25%	3,591	15.69%	177,517,462	5.27%
25% to 50%	7,675	33.54%	965,482,617	28.64%
50% to 55%	1,947	8.51%	306,930,249	9.11%
55% to 60%	2,047	8.95%	353,364,773	10.48%
60% to 65%	1,953	8.53%	353,534,475	10.49%
65% to 70%	1,719	7.51%	343,837,619	10.20%
70% to 75%	1,348	5.89%	277,410,827	8.23%
75% to 80%	1,540	6.73%	335,001,808	9.94%
80% to 85%	827	3.61%	205,316,362	6.09%
85% to 90%	200	0.87%	44,219,623	1.31%
90% to 95%	32	0.14%	7,324,176	0.22%
95% to 100%	5	0.03%	861,696	0.02%
Total	22,884	100.00%	3,370,801,688	100.00%
Weighted Average Indexed LTV			56.72%	



Average Indexed LTV - Last 6 Months						
	Mar-21	Apr-21	May-21	Jun-21	Jul-21	Aug-21
Indexed LTV	59.71	59.38	58.82	58.33	57.57	56.72

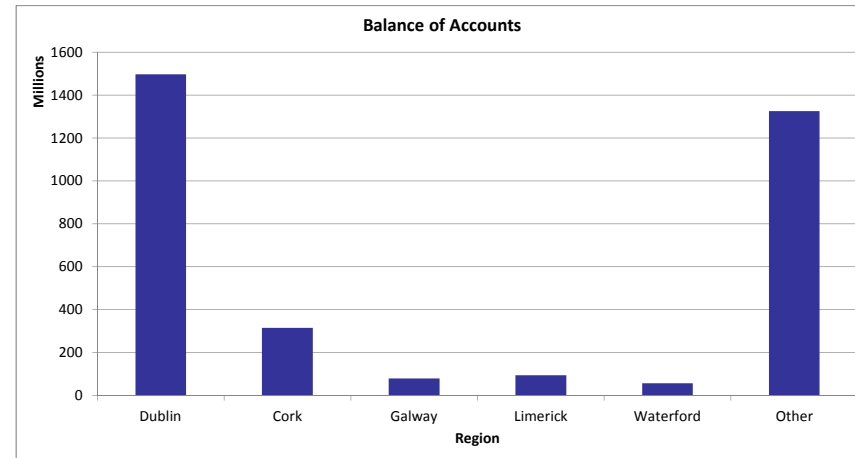
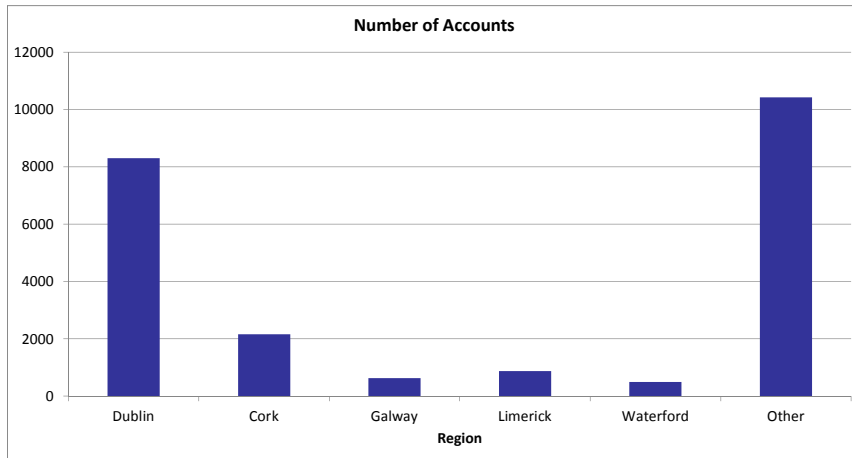


Seasoning				
Seasoning	Number of Accounts	% Number of Accounts	Outstanding Balance	% of Total Outstanding Balance
0 to 24 Months	661	2.89%	135,617,418	4.02%
24 to 48 Months	6,313	27.59%	1,234,221,905	36.62%
48 to 72 Months	4,605	20.12%	739,220,758	21.93%
72 to 96 Months	2,431	10.62%	343,471,906	10.19%
96 to 120 Months	134	0.59%	12,659,754	0.38%
120 to 144 Months	658	2.88%	70,650,380	2.10%
144 to 168 Months	1,774	7.75%	215,993,524	6.41%
168+ Months	6,308	27.57%	618,966,042	18.36%
Total	22,884	100.00%	3,370,801,688	100.00%
Weighted Average Seasoning			83.00	

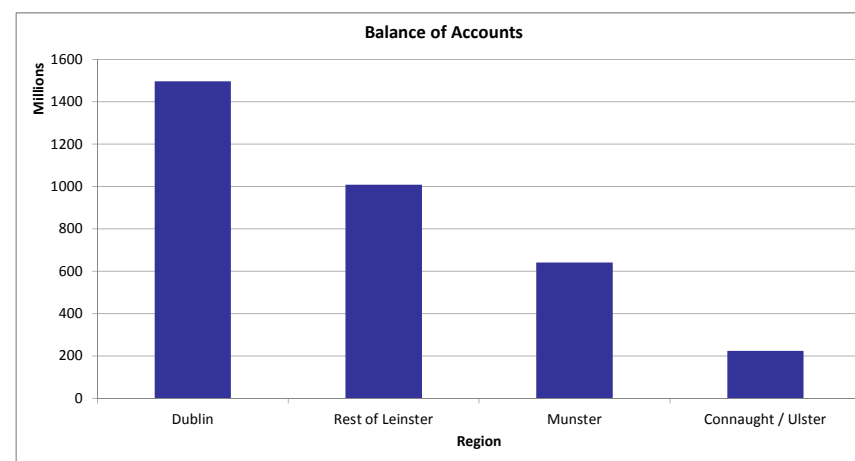
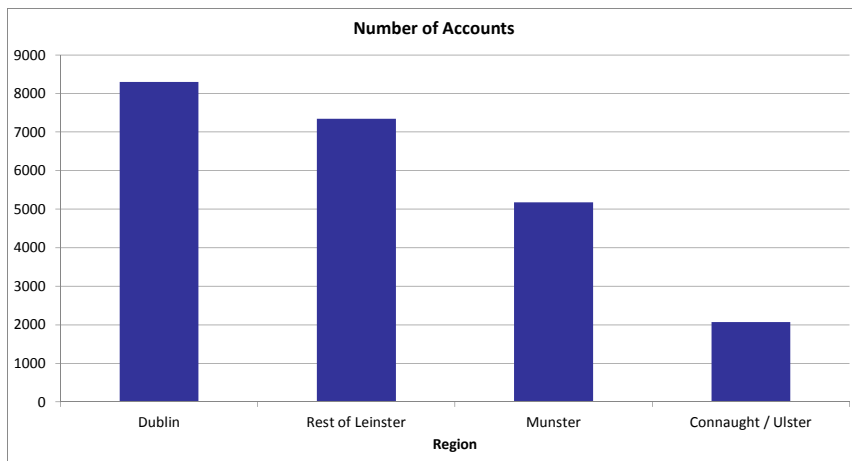


<i>Property Area (County)</i>				
County	Number of Accounts	% Number of Accounts	Outstanding Balance	% of Total Outstanding Balance
CARLOW	300	1.31%	33,457,174	0.99%
CAVAN	184	0.80%	20,417,034	0.61%
CLARE	563	2.46%	57,442,520	1.70%
CORK	2,165	9.46%	315,947,054	9.37%
DONEGAL	442	1.93%	37,637,142	1.12%
DUBLIN	8,296	36.25%	1,496,846,946	44.41%
GALWAY	626	2.74%	79,968,977	2.37%
KERRY	543	2.37%	57,831,590	1.72%
KILDARE	1,657	7.24%	257,985,769	7.65%
KILKENNY	306	1.34%	36,075,798	1.07%
LAOIS	362	1.58%	43,162,463	1.28%
LEITRIM	68	0.30%	6,446,819	0.19%
LIMERICK	878	3.84%	95,223,280	2.82%
LONGFORD	84	0.37%	7,464,815	0.22%
LOUTH	957	4.18%	115,774,675	3.43%
MAYO	277	1.21%	27,750,409	0.82%
MEATH	1,707	7.46%	244,874,204	7.26%
MONAGHAN	108	0.47%	12,493,343	0.37%
OFFALY	221	0.97%	24,463,729	0.73%
ROSCOMMON	129	0.56%	14,257,227	0.42%
SLIGO	234	1.02%	24,620,916	0.73%
TIPPERARY	532	2.32%	57,867,309	1.72%
WATERFORD	497	2.17%	57,718,386	1.71%
WESTMEATH	341	1.49%	39,655,849	1.18%
WEXFORD	469	2.05%	56,708,857	1.68%
WICKLOW	938	4.10%	148,709,404	4.41%
Total	22,884	100.00%	3,370,801,688	100.00%

<i>Property Area (County)</i>				
Major County	Number of Accounts	% Number of Accounts	Outstanding Balance	% of Total Outstanding Balance
Dublin	8,296	36.25%	1,496,846,946	44.41%
Cork	2,165	9.46%	315,947,054	9.37%
Galway	626	2.74%	79,968,977	2.37%
Limerick	878	3.84%	95,223,280	2.82%
Waterford	497	2.17%	57,718,386	1.71%
Other	10,422	45.54%	1,325,097,045	39.31%
Total	22,884	100.00%	3,370,801,688	100.00%

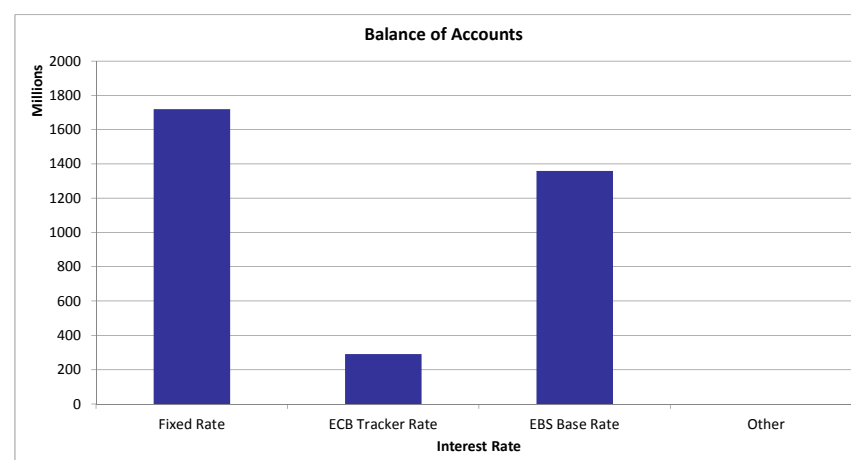
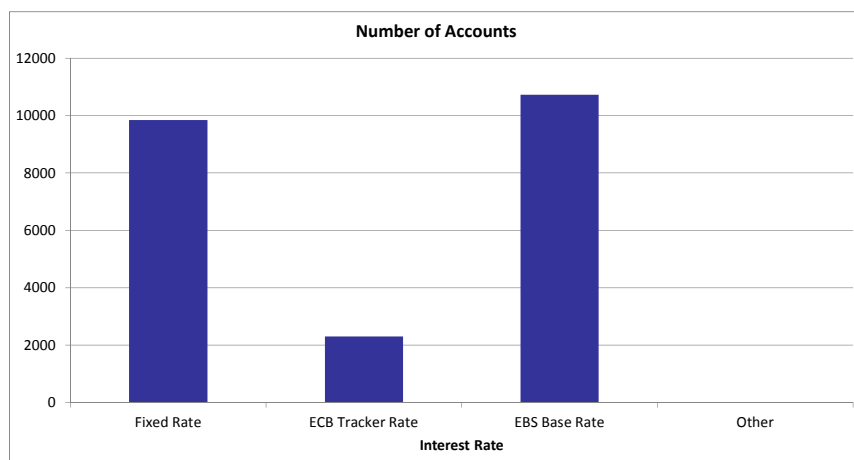


Property Area (Region)				
Region	Number of Accounts	% Number of Accounts	Outstanding Balance	% of Total Outstanding Balance
Dublin	8,296	36.25%	1,496,846,946	44.41%
Rest of Leinster	7,342	32.08%	1,008,332,736	29.91%
Munster	5,178	22.63%	642,030,139	19.05%
Connaught / Ulster	2,068	9.04%	223,591,867	6.63%
Total	22,884	100.00%	3,370,801,688	100.00%

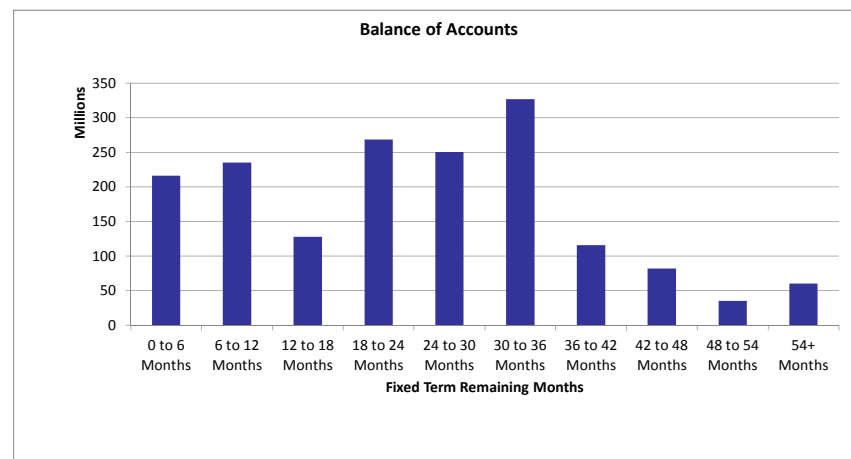
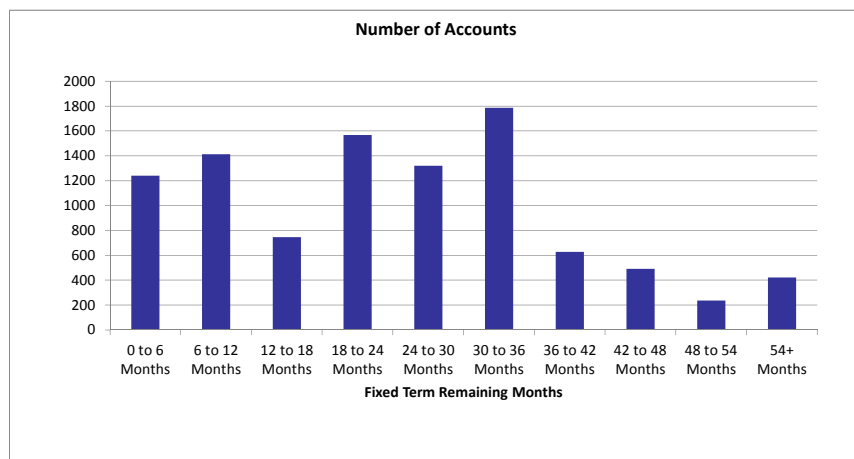


<i>Interest Rate</i>				
Interest Rate Type	Number of Accounts	% Number of Accounts	Outstanding Balance	% of Total Outstanding Balance
Fixed Rate	9,849	43.04%	1,719,565,701	51.01%
ECB Tracker Rate	2,304	10.07%	291,593,319	8.65%
EBS Base Rate	10,731	46.89%	1,359,642,667	40.34%
Other	0	0.00%	0	0.00%
Total	22,884	100.00%	3,370,801,688	100.00%

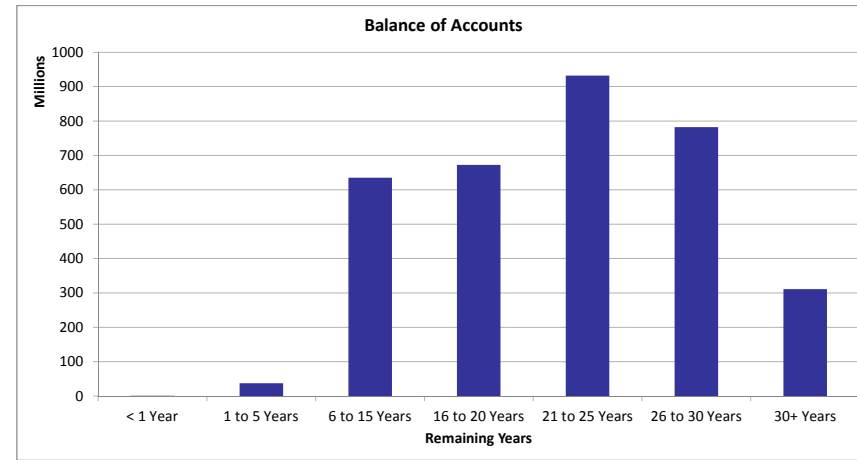
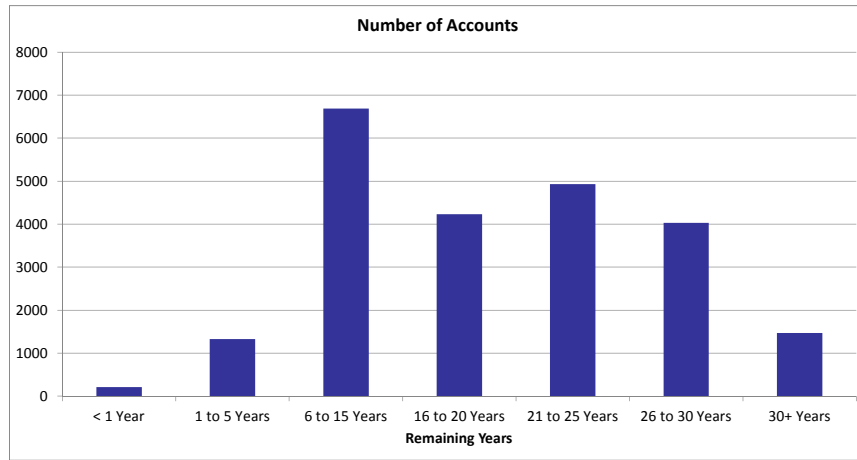
Interest Rate Type	Number of Accounts	Avg Interest Rate %
Fixed Rate	9,849	2.93
ECB Tracker Rate	2,304	1.19
EBS Base Rate	10,731	3.39
Other	0	0.00
<i>Weighted Average Interest Rate</i>		2.93



Fixed Term Remaining Months				
Fixed Term Remaining Months	Number of Accounts	% Number of Accounts	Outstanding Balance	% of Total Outstanding Balance
0 to 6 Months	1,240	12.59%	216,534,578	12.59%
6 to 12 Months	1,413	14.35%	235,498,369	13.70%
12 to 18 Months	745	7.56%	127,742,089	7.43%
18 to 24 Months	1,568	15.92%	268,415,263	15.61%
24 to 30 Months	1,319	13.39%	250,545,846	14.57%
30 to 36 Months	1,787	18.14%	326,792,425	19.00%
36 to 42 Months	629	6.39%	115,880,404	6.74%
42 to 48 Months	491	4.99%	82,223,518	4.78%
48 to 54 Months	236	2.40%	35,491,970	2.06%
54+ Months	421	4.27%	60,441,242	3.51%
Total	9,849	100.00%	1,719,565,701	100.00%
Weighted Fixed Term Remaining Months			24.45	

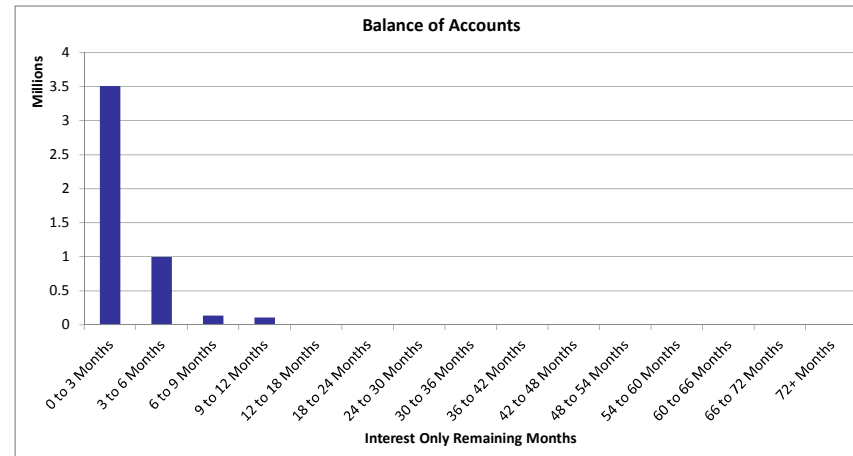
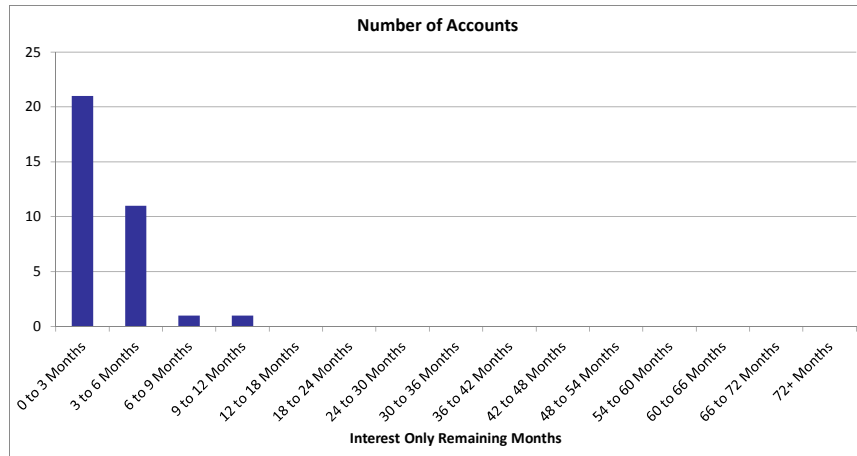


Remaining Years				
Remaining Years	Number of Accounts	% Number of Accounts	Outstanding Balance	% of Total Outstanding Balance
< 1 Year	214	0.94%	1,311,259	0.04%
1 to 5 Years	1,328	5.80%	37,367,036	1.11%
6 to 15 Years	6,685	29.21%	634,907,987	18.84%
16 to 20 Years	4,228	18.48%	672,049,512	19.94%
21 to 25 Years	4,927	21.53%	932,044,869	27.65%
26 to 30 Years	4,033	17.62%	781,929,725	23.20%
30+ Years	1,469	6.42%	311,191,300	9.23%
Total	22,884	100.00%	3,370,801,688	100.00%
Weighted Average Remaining Years			21.42	



Repayments Status				
Principal Repayments Status	Number of Accounts	% Number of Accounts	Outstanding Balance	% of Total Outstanding Balance
Principal and Interest	22,850	99.85%	3,366,051,181	99.86%
Interest Only (Standard)	34	0.15%	4,750,507	0.14%
Interest Only (COVID - 19)	0	0.00%	0	0.00%
Moratorium (COVID - 19)	0	0.00%	0	0.00%
Total	22,884	100.00%	3,370,801,688	100.00%

Interest Only (Standard) Remaining Term				
Interest Only (Standard) Remaining Term	Number of Accounts	% Number of Accounts	Outstanding Balance	% of Total Outstanding Balance
0 to 3 Months	21	61.76%	3,508,638	73.86%
3 to 6 Months	11	32.35%	996,393	20.97%
6 to 9 Months	1	2.94%	137,656	2.90%
9 to 12 Months	1	2.94%	107,820	2.27%
12 to 18 Months	0	0.00%	0	0.00%
18 to 24 Months	0	0.00%	0	0.00%
24 to 30 Months	0	0.00%	0	0.00%
48 to 54 Months	0	0.00%	0	0.00%
54 to 60 Months	0	0.00%	0	0.00%
60 to 66 Months	0	0.00%	0	0.00%
66 to 72 Months	0	0.00%	0	0.00%
72+ Months	0	0.00%	0	0.00%
Total	34	100.00%	4,750,507	100.00%
Weighted Average Interest Only (Standard) Remaining Term			2.19	



Occupancy Status				
Occupancy Status	Number of Accounts	% Number of Accounts	Outstanding Balance	% of Total Outstanding Balance
HOMELoan	22,880	99.98%	3,370,240,647	99.98%
RETAIL BTL	4	0.02%	561,040	0.02%
Total	22,884	100.00%	3,370,801,688	100.00%